

Anti-UCHL1 antibody (140-220 C-Term) (STJ96177)

STJ96177

GENERAL INFORMATION

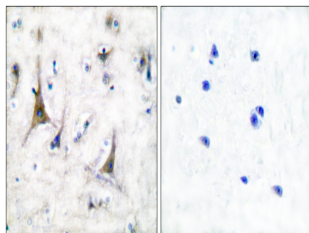
Product Type	Primary antibodies
Short Description	Rabbit polyclonal antibody anti-Ubiquitin Carboxyl-Terminal Hydrolase Isozyme L1 (140-220 C-Term) is suitable for use in Western Blot, Immunohistochemistry, Immunofluorescence and ELISA research applications.
Applications	WB, IHC-P, IF-P, ELISA
Host/Source	Rabbit
Reactivity	Human, Mouse, Rat

PRODUCT PROPERTIES

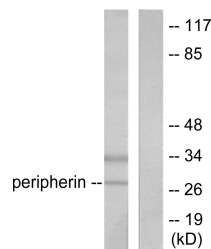
Clonality	Polyclonal
Clone ID	
Concentration	1 mg/mL
Conjugation	Unconjugated
Purification	The antibody was affinity-purified from rabbit anti-serum by affinity-chromatography.
Dilution Range	WB 1:500-1:2000 IHC 1:100-1:300 ELISA 1:10000
Formulation	PBS, 50% Glycerol, 0.5% BSA and 0.02% Sodium Azide.
Isotype	IgG
Storage Instruction	Store at -20°C for up to 1 year from the date of receipt, and avoid repeat freeze-thaw cycles.

TARGET INFORMATION

Gene ID	7345
Gene Symbol	UCHL1
Uniprot ID	UCHL1_HUMAN
Immunogen Region	The antiserum was produced against synthesized peptide derived from human PGP9.5 at amino acid range 171-220 140-220 C-Term
Specificity	UCHL1 polyclonal antibody (Ubiquitin Carboxyl-Terminal Hydrolase Isozyme L1) binds to endogenous Ubiquitin Carboxyl-Terminal Hydrolase Isozyme L1 at the amino acid region 140-220 C-Term.
Immunogen Sequence	



Immunohistochemistry analysis of paraffin-embedded human brain tissue, using PGP9.5 Antibody. The picture on the right is blocked with the synthesized peptide.



Western blot analysis of lysates from 293 cells, using PGP9.5 Antibody. The lane on the right is blocked with the synthesized peptide.



Western blot analysis of various cells using UCH-L1 Polyclonal Antibody diluted at 1:2000. Secondary antibody was diluted at 1:20000