

Anti-UBTD2 antibody (150-230 C-Term) (STJ96176)

STJ96176

GENERAL INFORMATION

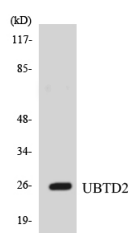
Product Type	Primary antibodies
Short Description	Rabbit polyclonal antibody anti-Ubiquitin Domain-Containing Protein 2 (150-230 C-Term) is suitable for use in Western Blot and ELISA research applications.
Applications	WB, ELISA
Host/Source	Rabbit
Reactivity	Human, Mouse

PRODUCT PROPERTIES

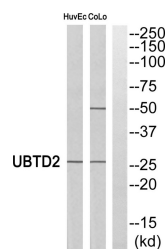
Clonality	Polyclonal
Clone ID	
Concentration	1 mg/mL
Conjugation	Unconjugated
Purification	The antibody was affinity-purified from rabbit anti-serum by affinity-chromatography.
Dilution Range	WB 1:500-1:2000 ELISA 1:40000
Formulation	PBS, 50% Glycerol, 0.5% BSA and 0.02% Sodium Azide.
Isotype	IgG
Storage	Store at -20°C for up to 1 year from the date of receipt, and avoid repeat freeze-thaw cycles.
Instruction	

TARGET INFORMATION

Gene ID	92181
Gene Symbol	UBTD2
Uniprot ID	UBTD2_HUMAN
Immunogen	The antiserum was produced against synthesized peptide derived from human UBTD2 at amino acid range 181-230
Immunogen Region	150-230 C-Term
Specificity	UBTD2 polyclonal antibody (Ubiquitin Domain-Containing Protein 2) binds to endogenous Ubiquitin Domain-Containing Protein 2 at the amino acid region 150-230 C-Term.
Immunogen Sequence	



Western blot analysis of the lysates from HUVEC cells using UBTD2 antibody.



Western blot analysis of UBTD2 Antibody. The lane on the right is blocked with the UBTD2 peptide.

This product is suitable for in-vitro studies under the RESEARCH USE ONLY [RUO] licence. This product must not be used as for diagnostic or other medical purposes.
 St John's Laboratory Ltd, Knowledge Dock Business Centre, University Way, London, E16 2RD | Tel: 0208 223 3081