

Anti-UBTD1 antibody (120-200 Internal) (STJ96175)

STJ96175

GENERAL INFORMATION

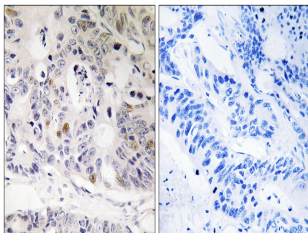
| | |
|--------------------------|---|
| Product Type | Primary antibodies |
| Short Description | Rabbit polyclonal antibody anti-Ubiquitin Domain-Containing Protein 1 (120-200 Internal) is suitable for use in Immunohistochemistry, Immunofluorescence and ELISA research applications. |
| Applications | IHC-P, IF-P, ELISA |
| Host/Source | Rabbit |
| Reactivity | Human, Mouse, Rat |

PRODUCT PROPERTIES

| | |
|----------------------------|--|
| Clonality | Polyclonal |
| Clone ID | |
| Concentration | 1 mg/mL |
| Conjugation | Unconjugated |
| Purification | The antibody was affinity-purified from rabbit anti-serum by affinity-chromatography. |
| Dilution Range | IHC 1:100-1:300 ELISA 1:20000 |
| Formulation | PBS, 50% Glycerol, 0.5% BSA and 0.02% Sodium Azide. |
| Isotype | IgG |
| Storage Instruction | Store at -20°C for up to 1 year from the date of receipt, and avoid repeat freeze-thaw cycles. |

TARGET INFORMATION

| | |
|---------------------------|--|
| Gene ID | 80019 |
| Gene Symbol | UBTD1 |
| Uniprot ID | UBTD1_HUMAN |
| Immunogen | The antiserum was produced against synthesized peptide derived from human UBTD1 at amino acid range 151-200 |
| Immunogen Region | 120-200 Internal |
| Specificity | UBTD1 polyclonal antibody (Ubiquitin Domain-Containing Protein 1) binds to endogenous Ubiquitin Domain-Containing Protein 1 at the amino acid region 120-200 Internal. |
| Immunogen Sequence | |



Immunohistochemistry analysis of paraffin-embedded human colon carcinoma tissue, using UBTD1 Antibody. The picture on the right is blocked with the synthesized peptide.