

## Anti-UBR1 antibody (790-870 Internal) (STJ96173)

STJ96173

### GENERAL INFORMATION

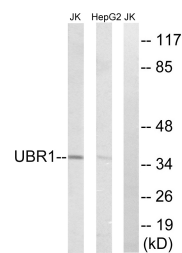
<b>Product Type</b>	Primary antibodies
<b>Short Description</b>	Rabbit polyclonal antibody anti-E3 Ubiquitin-Protein Ligase Ubr1 (790-870 Internal) is suitable for use in Western Blot, Immunohistochemistry, Immunofluorescence and ELISA research applications.
<b>Applications</b>	WB, IHC-P, IF-P, ELISA
<b>Host/Source</b>	Rabbit
<b>Reactivity</b>	Human, Mouse

### PRODUCT PROPERTIES

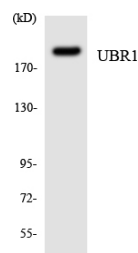
<b>Clonality</b>	Polyclonal
<b>Clone ID</b>	
<b>Concentration</b>	1 mg/mL
<b>Conjugation</b>	Unconjugated
<b>Purification</b>	The antibody was affinity-purified from rabbit anti-serum by affinity-chromatography.
<b>Dilution Range</b>	WB 1:500-1:2000 IHC 1:100-1:300 ELISA 1:20000
<b>Formulation</b>	PBS, 50% Glycerol, 0.5% BSA and 0.02% Sodium Azide.
<b>Isotype</b>	IgG
<b>Storage Instruction</b>	Store at -20°C for up to 1 year from the date of receipt, and avoid repeat freeze-thaw cycles.

### TARGET INFORMATION

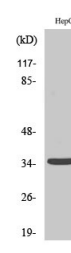
<b>Gene ID</b>	197131
<b>Gene Symbol</b>	UBR1
<b>Uniprot ID</b>	UBR1_HUMAN
<b>Immunogen Region</b>	The antiserum was produced against synthesized peptide derived from human UBR1 at amino acid range 821-870
<b>Immunogen Region</b>	790-870 Internal
<b>Specificity</b>	UBR1 polyclonal antibody (E3 Ubiquitin-Protein Ligase Ubr1) binds to endogenous E3 Ubiquitin-Protein Ligase Ubr1 at the amino acid region 790-870 Internal.
<b>Immunogen Sequence</b>	



Western blot analysis of lysates from HepG2 and Jurkat cells, using UBR1 Antibody. The lane on the right is blocked with the synthesized peptide.



Western blot analysis of the lysates from HUVEC cells using UBR1 antibody.



Western blot analysis of various cells using Ubr1 Polyclonal Antibody diluted at 1:2000. Secondary antibody was diluted at 1:20000

This product is suitable for in-vitro studies under the RESEARCH USE ONLY [RUO] licence. This product must not be used as for diagnostic or other medical purposes.  
St John's Laboratory Ltd, Knowledge Dock Business Centre, University Way, London, E16 2RD | Tel: 0208 223 3081