

Anti-UBFD1 antibody (340-420 C-Term) (STJ96172)

STJ96172

GENERAL INFORMATION

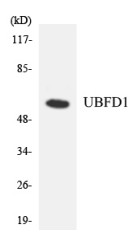
Product Type	Primary antibodies
Short Description	Rabbit polyclonal antibody anti-Ubiquitin Domain-Containing Protein Ubfd1 (340-420 C-Term) is suitable for use in Western Blot and ELISA research applications.
Applications	WB, ELISA
Host/Source	Rabbit
Reactivity	Human, Mouse, Rat

PRODUCT PROPERTIES

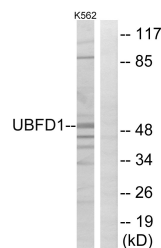
Clonality	Polyclonal
Clone ID	
Concentration	1 mg/mL
Conjugation	Unconjugated
Purification	The antibody was affinity-purified from rabbit anti-serum by affinity-chromatography.
Dilution Range	WB 1:500-1:2000 ELISA 1:10000
Formulation	PBS, 50% Glycerol, 0.5% BSA and 0.02% Sodium Azide.
Isotype	IgG
Storage	Store at -20°C for up to 1 year from the date of receipt, and avoid repeat freeze-thaw cycles.
Instruction	

TARGET INFORMATION

Gene ID	56061
Gene Symbol	UBFD1
Uniprot ID	UBFD1_HUMAN
Immunogen	The antiserum was produced against synthesized peptide derived from human UBFD1 at amino acid range 135-184
Immunogen Region	340-420 C-Term
Specificity	UBFD1 polyclonal antibody (Ubiquitin Domain-Containing Protein Ubfd1) binds to endogenous Ubiquitin Domain-Containing Protein Ubfd1 at the amino acid region 340-420 C-Term.
Immunogen Sequence	



Western blot analysis of the lysates from COLO205 cells using UBFD1 antibody.



Western blot analysis of lysates from K562 cells, using UBFD1 Antibody. The lane on the right is blocked with the synthesized peptide.

This product is suitable for in-vitro studies under the RESEARCH USE ONLY [RUO] licence. This product must not be used as for diagnostic or other medical purposes.
St John's Laboratory Ltd, Knowledge Dock Business Centre, University Way, London, E16 2RD | Tel: 0208 223 3081