

Anti-UBN1 antibody (130-210 Internal) (STJ96171)

STJ96171

GENERAL INFORMATION

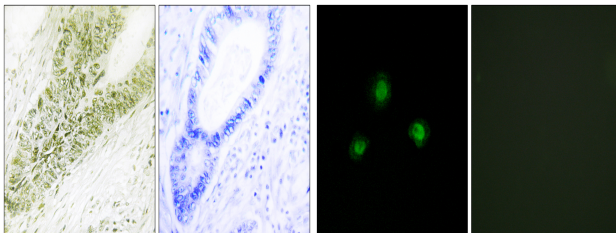
Product Type	Primary antibodies
Short Description	Rabbit polyclonal antibody anti-Ubinuclein-1 (130-210 Internal) is suitable for use in Western Blot, Immunohistochemistry, Immunofluorescence, Immunocytochemistry and ELISA research applications.
Applications	WB, IHC-P, IF, ICC, ELISA
Host/Source	Rabbit
Reactivity	Human, Mouse

PRODUCT PROPERTIES

Clonality	Polyclonal
Clone ID	
Concentration	1 mg/mL
Conjugation	Unconjugated
Purification	The antibody was affinity-purified from rabbit anti-serum by affinity-chromatography.
Dilution Range	IHC 1:100-1:300 IF 1:200-1:1000 ELISA 1:10000
Formulation	PBS, 50% Glycerol, 0.5% BSA and 0.02% Sodium Azide.
Isotype	IgG
Storage Instruction	Store at -20°C for up to 1 year from the date of receipt, and avoid repeat freeze-thaw cycles.

TARGET INFORMATION

Gene ID	29855
Gene Symbol	UBN1
Uniprot ID	UBN1_HUMAN
Immunogen	The antiserum was produced against synthesized peptide derived from human Ubinuclein at amino acid range 161-210
Immunogen Region	130-210 Internal
Specificity	UBN1 polyclonal antibody (Ubinuclein-1) binds to endogenous Ubinuclein-1 at the amino acid region 130-210 Internal.
Immunogen Sequence	



Immunohistochemistry analysis of paraffin-embedded human colon carcinoma tissue, using Ubinuclein Antibody. The picture on the right is blocked with the synthesized peptide.

Immunofluorescence analysis of A549 cells, using Ubinuclein Antibody. The picture on the right is blocked with the synthesized peptide.

This product is suitable for in-vitro studies under the RESEARCH USE ONLY [RUO] licence. This product must not be used as for diagnostic or other medical purposes.
St John's Laboratory Ltd, Knowledge Dock Business Centre, University Way, London, E16 2RD | Tel: 0208 223 3081