

Anti-UBE2T antibody (90-170 Internal) (STJ96165)

STJ96165

GENERAL INFORMATION

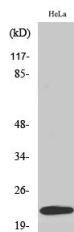
Product Type	Primary antibodies
Short Description	Rabbit polyclonal antibody anti-Ubiquitin-Conjugating Enzyme E2 T (90-170 Internal) is suitable for use in Western Blot and ELISA research applications.
Applications	WB, ELISA
Host/Source	Rabbit
Reactivity	Human, Mouse

PRODUCT PROPERTIES

Clonality	Polyclonal
Clone ID	
Concentration	1 mg/mL
Conjugation	Unconjugated
Purification	The antibody was affinity-purified from rabbit anti-serum by affinity-chromatography.
Dilution Range	WB 1:500-1:2000 ELISA 1:10000
Formulation	PBS, 50% Glycerol, 0.5% BSA and 0.02% Sodium Azide.
Isotype	IgG
Storage Instruction	Store at -20°C for up to 1 year from the date of receipt, and avoid repeat freeze-thaw cycles.

TARGET INFORMATION

Gene ID	29089
Gene Symbol	UBE2T
Uniprot ID	UBE2T_HUMAN
Immunogen	The antiserum was produced against synthesized peptide derived from human UBE2T at amino acid range 121-170
Immunogen Region	90-170 Internal
Specificity	UBE2T polyclonal antibody (Ubiquitin-Conjugating Enzyme E2 T) binds to endogenous Ubiquitin-Conjugating Enzyme E2 T at the amino acid region 90-170 Internal.
Immunogen Sequence	



Western blot analysis of various cells using UBE2T Polyclonal Antibody. Secondary antibody was diluted at 1:20000