

Anti-UBA7 antibody (940-1020 C-Term) (STJ96162)

STJ96162

GENERAL INFORMATION

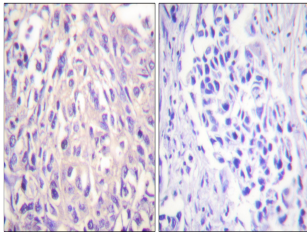
Product Type	Primary antibodies
Short Description	Rabbit polyclonal antibody anti-Ubiquitin-Like Modifier-Activating Enzyme 7 (940-1020 C-Term) is suitable for use in Western Blot, Immunohistochemistry, Immunofluorescence and ELISA research applications.
Applications	WB, IHC-P, IF-P, ELISA
Host/Source	Rabbit
Reactivity	Human, Rat, Mouse

PRODUCT PROPERTIES

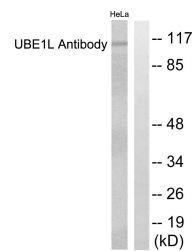
Clonality	Polyclonal
Clone ID	
Concentration	1 mg/mL
Conjugation	Unconjugated
Purification	The antibody was affinity-purified from rabbit anti-serum by affinity-chromatography.
Dilution Range	WB 1:500-1:2000 IHC 1:100-1:300 ELISA 1:10000
Formulation	PBS, 50% Glycerol, 0.5% BSA and 0.02% Sodium Azide.
Isotype	IgG
Storage Instruction	Store at -20°C for up to 1 year from the date of receipt, and avoid repeat freeze-thaw cycles.

TARGET INFORMATION

Gene ID	7318
Gene Symbol	UBA7
Uniprot ID	UBA7_HUMAN
Immunogen	The antiserum was produced against synthesized peptide derived from human UBE1L at amino acid range 963-1012
Immunogen Region	940-1020 C-Term
Specificity	UBA7 polyclonal antibody (Ubiquitin-Like Modifier-Activating Enzyme 7) binds to endogenous Ubiquitin-Like Modifier-Activating Enzyme 7 at the amino acid region 940-1020 C-Term.
Immunogen Sequence	



Immunohistochemistry analysis of paraffin-embedded human breast carcinoma tissue, using UBE1L Antibody. The picture on the right is blocked with the synthesized peptide.



Western blot analysis of lysates from HeLa cells, using UBE1L Antibody. The lane on the right is blocked with the synthesized peptide.



Western blot analysis of various cells using UBE1L Polyclonal Antibody diluted at 1:2000. Secondary antibody was diluted at 1:20000