

Anti-RNF144A antibody (120-200 Internal) (STJ96161)

STJ96161

GENERAL INFORMATION

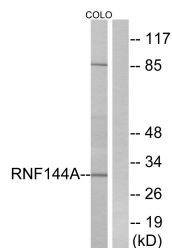
Product Type	Primary antibodies
Short Description	Rabbit polyclonal antibody anti-E3 Ubiquitin-Protein Ligase Rnf144a (120-200 Internal) is suitable for use in Western Blot and ELISA research applications.
Applications	WB, ELISA
Host/Source	Rabbit
Reactivity	Human, Mouse

PRODUCT PROPERTIES

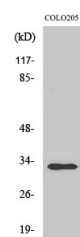
Clonality	Polyclonal
Clone ID	
Concentration	1 mg/mL
Conjugation	Unconjugated
Purification	The antibody was affinity-purified from rabbit anti-serum by affinity-chromatography.
Dilution Range	WB 1:500-1:2000 ELISA 1:40000
Formulation	PBS, 50% Glycerol, 0.5% BSA and 0.02% Sodium Azide.
Isotype	IgG
Storage Instruction	Store at -20°C for up to 1 year from the date of receipt, and avoid repeat freeze-thaw cycles.

TARGET INFORMATION

Gene ID	9781
Gene Symbol	RNF144A
Uniprot ID	R144A_HUMAN
Immunogen	The antiserum was produced against synthesized peptide derived from human RNF144A at amino acid range 151-200
Immunogen Region	120-200 Internal
Specificity	RNF144A polyclonal antibody (E3 Ubiquitin-Protein Ligase Rnf144a) binds to endogenous E3 Ubiquitin-Protein Ligase Rnf144a at the amino acid region 120-200 Internal.
Immunogen Sequence	



Western blot analysis of lysates from COLO cells, using RNF144A Antibody. The lane on the right is blocked with the synthesized peptide.



Western blot analysis of various cells using UBCE7IP4 Polyclonal Antibody. Secondary antibody was diluted at 1:20000