

Anti-UBA2 antibody (560-640 C-Term) (STJ96159)

STJ96159

GENERAL INFORMATION

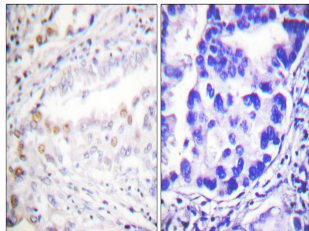
Product Type	Primary antibodies
Short Description	Rabbit polyclonal antibody anti-Sumo-Activating Enzyme Subunit 2 (560-640 C-Term) is suitable for use in Western Blot, Immunohistochemistry, Immunofluorescence, Immunocytochemistry and ELISA research applications.
Applications	WB, IHC-P, IF, ICC, ELISA
Host/Source	Rabbit
Reactivity	Human, Rat, Mouse

PRODUCT PROPERTIES

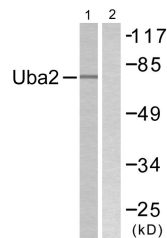
Clonality	Polyclonal
Clone ID	
Concentration	1 mg/mL
Conjugation	Unconjugated
Purification	The antibody was affinity-purified from rabbit anti-serum by affinity-chromatography.
Dilution Range	WB 1:500-1:2000 IHC 1:100-1:300 IF 1:200-1:1000 ELISA 1:10000
Formulation	PBS, 50% Glycerol, 0.5% BSA and 0.02% Sodium Azide.
Isotype	IgG
Storage Instruction	Store at -20°C for up to 1 year from the date of receipt, and avoid repeat freeze-thaw cycles.

TARGET INFORMATION

Gene ID	10054
Gene Symbol	UBA2
Uniprot ID	SAE2_HUMAN
Immunogen	The antiserum was produced against synthesized peptide derived from human Uba2 at amino acid range 591-640
Immunogen Region	560-640 C-Term
Specificity	UBA2 polyclonal antibody (Sumo-Activating Enzyme Subunit 2) binds to endogenous Sumo-Activating Enzyme Subunit 2 at the amino acid region 560-640 C-Term.
Immunogen Sequence	



Immunohistochemistry analysis of paraffin-embedded human lung carcinoma tissue, using Uba2 Antibody. The picture on the right is blocked with the synthesized peptide.



Western blot analysis of lysates from 293 cells, treated with UV 5', using Uba2 Antibody. The lane on the right is blocked with the synthesized peptide.



Western blot analysis of various cells using UBA2 Polyclonal Antibody. Secondary antibody was diluted at 1:20000 cells nucleus extracted by Minute™ Cytoplasmic and Nuclear Fractionation kit (SC-003, Inventiotech, MN, USA).