

## Anti-Ub antibody (40-120 Internal) (STJ96158)

STJ96158

### GENERAL INFORMATION

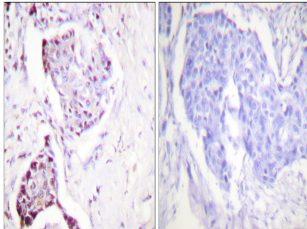
<b>Product Type</b>	Primary antibodies
<b>Short Description</b>	Rabbit polyclonal antibody anti-Polyubiquitin-B and Polyubiquitin-C and Ubiquitin-40S ribosomal protein S27a and Ubiquitin-60S ribosomal protein L40 (40-120 Internal) is suitable for use in Western Blot, Immunohistochemistry, Immunofluorescence and E
<b>Applications</b>	WB, IHC-P, IF-P, ELISA
<b>Host/Source</b>	Rabbit
<b>Reactivity</b>	Human, Mouse, Rat

### PRODUCT PROPERTIES

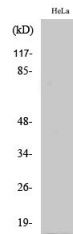
<b>Clonality</b>	Polyclonal
<b>Clone ID</b>	
<b>Concentration</b>	1 mg/mL
<b>Conjugation</b>	Unconjugated
<b>Purification</b>	The antibody was affinity-purified from rabbit anti-serum by affinity-chromatography.
<b>Dilution Range</b>	WB 1:500-1:2000 IHC 1:100-1:300 ELISA 1:20000
<b>Formulation</b>	PBS, 50% Glycerol, 0.5% BSA and 0.02% Sodium Azide.
<b>Isotype</b>	IgG
<b>Storage Instruction</b>	Store at -20°C for up to 1 year from the date of receipt, and avoid repeat freeze-thaw cycles.

### TARGET INFORMATION

<b>Gene ID</b>	<a href="#">7316</a> <a href="#">7314</a> <a href="#">6233</a> <a href="#">UBC</a> <a href="#">UBB</a>
<b>Uniprot ID</b>	<a href="#">UBC_HUMAN</a> <a href="#">UBB_HUMAN</a> <a href="#">RS27A_HUMAN</a>
<b>Immunogen</b>	The antiserum was produced against synthesized peptide derived from human Ubiquitin at amino acid range 40-89
<b>Immunogen Region</b>	40-120 Internal
<b>Specificity</b>	Ub polyclonal antibody (Polyubiquitin-B and Polyubiquitin-C and Ubiquitin-40S ribosomal protein S27a and Ubiquitin-60S ribosomal protein L40) binds to endogenous Polyubiquitin-B and Polyubiquitin-C and Ubiquitin-40S ribosomal protein S27a and Ubiquitin
<b>Immunogen Sequence</b>	



Immunohistochemistry analysis of paraffin-embedded human breast carcinoma tissue, using Ubiquitin Antibody. The picture on the right is blocked with the synthesized peptide.



Western blot analysis of various cells using Ub Polyclonal Antibody. Secondary antibody was diluted at 1:20000

This product is suitable for in-vitro studies under the RESEARCH USE ONLY [RUO] licence. This product must not be used as for diagnostic or other medical purposes.  
St John's Laboratory Ltd, Knowledge Dock Business Centre, University Way, London, E16 2RD | Tel: 0208 223 3081