

Anti-KCNK1 antibody (260-340 C-Term) (STJ96151)

STJ96151

GENERAL INFORMATION

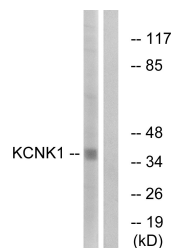
Product Type	Primary antibodies
Short Description	Rabbit polyclonal antibody anti-Potassium Channel Subfamily K Member 1 (260-340 C-Term) is suitable for use in Western Blot and ELISA research applications.
Applications	WB, ELISA
Host/Source	Rabbit
Reactivity	Human, Rat

PRODUCT PROPERTIES

Clonality	Polyclonal
Clone ID	
Concentration	1 mg/mL
Conjugation	Unconjugated
Purification	The antibody was affinity-purified from rabbit anti-serum by affinity-chromatography.
Dilution Range	WB 1:500-1:2000 ELISA 1:40000
Formulation	PBS, 50% Glycerol, 0.5% BSA and 0.02% Sodium Azide.
Isotype	IgG
Storage	Store at -20°C for up to 1 year from the date of receipt, and avoid repeat freeze-thaw cycles.
Instruction	

TARGET INFORMATION

Gene ID	3775
Gene Symbol	KCNK1
Uniprot ID	KCNK1_HUMAN
Immunogen	The antiserum was produced against synthesized peptide derived from human KCNK1 at amino acid range 287-336
Immunogen Region	260-340 C-Term
Specificity	KCNK1 polyclonal antibody (Potassium Channel Subfamily K Member 1) binds to endogenous Potassium Channel Subfamily K Member 1 at the amino acid region 260-340 C-Term.
Immunogen Sequence	



Western blot analysis of lysates from Jurkat cells, using KCNK1 Antibody. The lane on the right is blocked with the synthesized peptide.