

Anti-TNFSF12 antibody (10-90 Internal) (STJ96150)

STJ96150

GENERAL INFORMATION

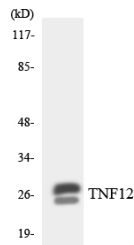
Product Type	Primary antibodies
Short Description	Rabbit polyclonal antibody anti-Tumor Necrosis Factor Ligand Superfamily Member 12 (10-90 Internal) is suitable for use in Western Blot, Immunohistochemistry, Immunofluorescence, Immunocytochemistry and ELISA research applications.
Applications	WB, IHC-P, IF, ICC, ELISA
Host/Source	Rabbit
Reactivity	Human, Mouse

PRODUCT PROPERTIES

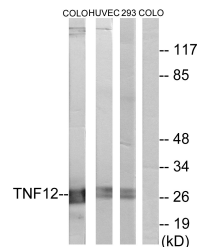
Clonality	Polyclonal
Clone ID	
Concentration	1 mg/mL
Conjugation	Unconjugated
Purification	The antibody was affinity-purified from rabbit anti-serum by affinity-chromatography.
Dilution Range	WB 1:500-1:2000 IHC 1:100-1:300 IF 1:200-1:1000 ELISA 1:20000
Formulation	PBS, 50% Glycerol, 0.5% BSA and 0.02% Sodium Azide.
Isotype	IgG
Storage Instruction	Store at -20°C for up to 1 year from the date of receipt, and avoid repeat freeze-thaw cycles.

TARGET INFORMATION

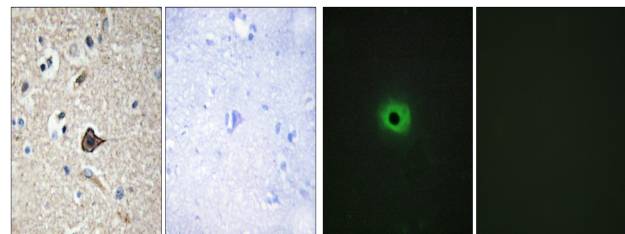
Gene ID	407977/8742
Gene Symbol	TNFSF12
Uniprot ID	TNF12_HUMAN
Immunogen	The antiserum was produced against synthesized peptide derived from human TNFSF12 at amino acid range 41-90
Immunogen Region	10-90 Internal
Specificity	TNFSF12 polyclonal antibody (Tumor Necrosis Factor Ligand Superfamily Member 12) binds to endogenous Tumor Necrosis Factor Ligand Superfamily Member 12 at the amino acid region 10-90 Internal.
Immunogen Sequence	



Western blot analysis of the lysates from HeLa cells using TNF12 antibody.



Western blot analysis of lysates from CQLO205, HUVEC cells, and 293 cells, using TNF12 Antibody. The lane on the right is blocked with the synthesized peptide.



Immunohistochemistry analysis of paraffin-embedded human brain, using TNF12 Antibody. The picture on the right is blocked with the synthesized peptide.

Immunofluorescence analysis of HeLa cells, using TNF12 Antibody. The picture on the right is blocked with the synthesized peptide.

This product is suitable for in-vitro studies under the RESEARCH USE ONLY [RUO] licence. This product must not be used as for diagnostic or other medical purposes.
St John's Laboratory Ltd, Knowledge Dock Business Centre, University Way, London, E16 2RD | Tel: 0208 223 3081