

Anti-TUBG1 antibody (360-440 C-Term) (STJ96146)

STJ96146

GENERAL INFORMATION

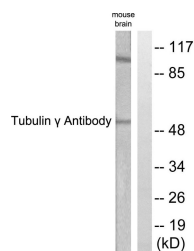
Product Type	Primary antibodies
Short Description	Rabbit polyclonal antibody anti-Tubulin Gamma-1 Chain (360-440 C-Term) is suitable for use in Western Blot, Immunohistochemistry, Immunofluorescence and ELISA research applications.
Applications	WB, IHC-P, IF-P, ELISA
Host/Source	Rabbit
Reactivity	Human, Mouse, Rat

PRODUCT PROPERTIES

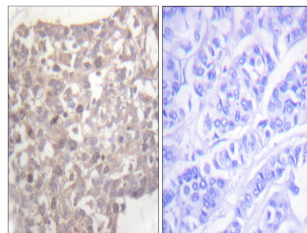
Clonality	Polyclonal
Clone ID	
Concentration	1 mg/mL
Conjugation	Unconjugated
Purification	The antibody was affinity-purified from rabbit anti-serum by affinity-chromatography.
Dilution Range	WB 1:500-1:2000 IHC 1:100-1:300 ELISA 1:5000
Formulation	PBS, 50% Glycerol, 0.5% BSA and 0.02% Sodium Azide.
Isotype	IgG
Storage Instruction	Store at -20°C for up to 1 year from the date of receipt, and avoid repeat freeze-thaw cycles.

TARGET INFORMATION

Gene ID	7283
Gene Symbol	TUBG1
Uniprot ID	TBG1_HUMAN
Immunogen	The antiserum was produced against synthesized peptide derived from human Tubulin gamma at amino acid range 386-435
Immunogen Region	360-440 C-Term
Specificity	TUBG1 polyclonal antibody (Tubulin Gamma-1 Chain) binds to endogenous Tubulin Gamma-1 Chain at the amino acid region 360-440 C-Term.
Immunogen Sequence	



Western blot analysis of lysates from mouse brain, using Tubulin gamma Antibody. The lane on the right is blocked with the synthesized peptide.



Immunohistochemistry analysis of paraffin-embedded human breast carcinoma tissue, using Tubulin gamma Antibody. The picture on the right is blocked with the synthesized peptide.