

Anti-TUBB3 antibody (370-450 C-Term) (STJ96145)

STJ96145

GENERAL INFORMATION

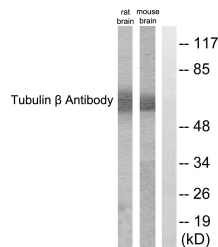
Product Type	Primary antibodies
Short Description	Rabbit polyclonal antibody anti-Tubulin Beta-3 Chain (370-450 C-Term) is suitable for use in Western Blot, Immunohistochemistry, Immunofluorescence, Immunocytochemistry and ELISA research applications.
Applications	WB, IHC-P, IF, ICC, ELISA
Host/Source	Rabbit
Reactivity	Human, Mouse, Rat, Pig, Bovine

PRODUCT PROPERTIES

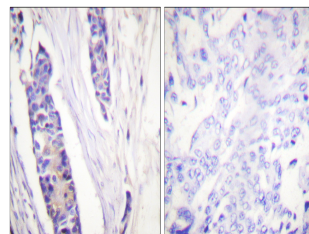
Clonality	Polyclonal
Clone ID	
Concentration	1 mg/mL
Conjugation	Unconjugated
Purification	The antibody was affinity-purified from rabbit anti-serum by affinity-chromatography.
Dilution Range	WB 1:500-1:2000 IHC 1:100-1:300 IF 1:200-1:1000 ELISA 1:5000
Formulation	PBS, 50% Glycerol, 0.5% BSA and 0.02% Sodium Azide.
Isotype	IgG
Storage Instruction	Store at -20°C for up to 1 year from the date of receipt, and avoid repeat freeze-thaw cycles.

TARGET INFORMATION

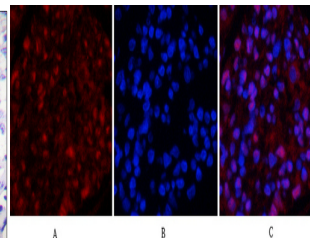
Gene ID	10381
Gene Symbol	TUBB3
Uniprot ID	TBB3_HUMAN
Immunogen	The antiserum was produced against synthesized peptide derived from human Tubulin beta at amino acid range 401-450
Immunogen Region	370-450 C-Term
Specificity	TUBB3 polyclonal antibody (Tubulin Beta-3 Chain) binds to endogenous Tubulin Beta-3 Chain at the amino acid region 370-450 C-Term.
Immunogen Sequence	



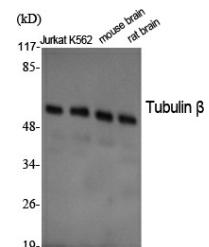
Western blot analysis of lysates from mouse brain and rat brain cells, using Tubulin beta Antibody. The lane on the right is blocked with the synthesized peptide.



Immunohistochemistry analysis of paraffin-embedded human breast carcinoma tissue, using Tubulin beta Antibody. The picture on the right is blocked with the synthesized peptide.



Immunofluorescence analysis of rat-kidney tissue. 1, Tubulin Beta Polyclonal Antibody (red) was diluted at 1:200 (4°C, overnight). 2, Cy3 labeled Secondary antibody was diluted at 1:300 (room temperature, 50min). 3, Picture B: DAPI (blue) 10min. Picture A: Target. Picture B: DAPI. Picture C: merge of A+B



Western blot analysis of various cells using Tubulin Beta Polyclonal Antibody diluted at 1:20000. Secondary antibody was diluted at 1:20000

This product is suitable for in-vitro studies under the RESEARCH USE ONLY [RUO] licence. This product must not be used as for diagnostic or other medical purposes.
St John's Laboratory Ltd, Knowledge Dock Business Centre, University Way, London, E16 2RD | Tel: 0208 223 3081