

Anti-Tubulin Alpha-3C/D/E antibody (370-450 C-Term) (STJ96144)

STJ96144

GENERAL INFORMATION

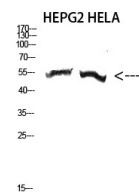
Product Type	Primary antibodies
Short Description	Rabbit polyclonal antibody anti-OBSOLETE and Tubulin alpha-3E chain (370-450 C-Term) is suitable for use in Western Blot and ELISA research applications.
Applications	WB, ELISA
Host/Source	Rabbit
Reactivity	Human, Mouse, Rat

PRODUCT PROPERTIES

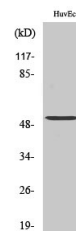
Clonality	Polyclonal
Clone ID	
Concentration	1 mg/mL
Conjugation	Unconjugated
Purification	The antibody was affinity-purified from rabbit anti-serum by affinity-chromatography.
Dilution Range	WB 1:500-1:2000 ELISA 1:5000
Formulation	PBS, 50% Glycerol, 0.5% BSA and 0.02% Sodium Azide.
Isotype	IgG
Storage Instruction	Store at -20°C for up to 1 year from the date of receipt, and avoid repeat freeze-thaw cycles.

TARGET INFORMATION

Gene ID	112714
Gene Symbol	TUBA3E
Uniprot ID	TBA3E_HUMAN
Immunogen	The antiserum was produced against synthesized peptide derived from human TUBA3C/E at amino acid range 201-250
Immunogen Region	370-450 C-Term
Specificity	Tubulin Alpha-3C/D/E polyclonal antibody (OBSOLETE and Tubulin alpha-3E chain) binds to endogenous OBSOLETE and Tubulin alpha-3E chain at the amino acid region 370-450 C-Term.
Immunogen Sequence	



Western blot analysis of HEPG2 HELA cells using Antibody diluted at 1:2000. Secondary antibody was diluted at 1:20000



Western blot analysis of various cells using Tubulin Alpha-3C/D/E Polyclonal Antibody diluted at 1: 2000. Secondary antibody was diluted at 1:20000