

Anti-Tubulin Alpha antibody (380-460 C-Term) (STJ96142)

STJ96142

GENERAL INFORMATION

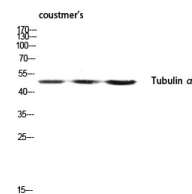
Product Type	Primary antibodies
Short Description	Rabbit polyclonal antibody anti-Tubulin alpha-1A chain and Tubulin alpha-1B chain (380-460 C-Term) is suitable for use in Western Blot, Immunohistochemistry, Immunofluorescence, Immunocytochemistry and ELISA research applications.
Applications	WB, IHC-P, IF, ICC, ELISA
Host/Source	Rabbit
Reactivity	Human, Mouse, Rat

PRODUCT PROPERTIES

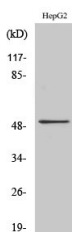
Clonality	Polyclonal
Clone ID	
Concentration	1 mg/mL
Conjugation	Unconjugated
Purification	The antibody was affinity-purified from rabbit anti-serum by affinity-chromatography.
Dilution Range	WB 1:500-1:2000 IHC 1:100-1:300 IF 1:200-1:1000 ELISA 1:5000
Formulation	PBS, 50% Glycerol, 0.5% BSA and 0.02% Sodium Azide.
Isotype	IgG
Storage Instruction	Store at -20°C for up to 1 year from the date of receipt, and avoid repeat freeze-thaw cycles.

TARGET INFORMATION

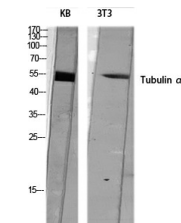
Gene ID	7846 10376
Gene Symbol	TUBA1A TUBA1B
Uniprot ID	TBA1A_HUMAN TBA1B_HUMAN
Immunogen	The antiserum was produced against synthesized peptide derived from human Tubulin alpha at amino acid range 402-451
Immunogen Region	380-460 C-Term
Immunogen Specificity	Tubulin Alpha polyclonal antibody (Tubulin alpha-1A chain and Tubulin alpha-1B chain) binds to endogenous Tubulin alpha-1A chain and Tubulin alpha-1B chain at the amino acid region 380-460 C-Term.
Immunogen Sequence	



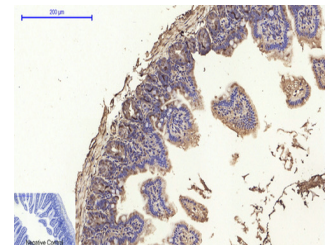
Western blot analysis of coustmer's lysis using Tubulin Alpha antibody. Antibody was diluted at 1:2000. Secondary antibody was diluted at 1:20000



Western blot analysis of MCF7 cells using Tubulin Alpha Polyclonal Antibody diluted at 1: 2000. Secondary antibody was diluted at 1:20000



Western blot analysis of KB 3T3 lysis using Tubulin Alpha antibody. Antibody was diluted at 1:2000. Secondary antibody was diluted at 1:20000



Immunohistochemical analysis of paraffin-embedded Mouse-colon tissue. 1, Tubulin Alpha Polyclonal Antibody was diluted at 1:200 (4°C, overnight). 2, Sodium citrate pH 6.0 was used for antibody retrieval (-98°C, 20min). 3, Secondary antibody was diluted at 1:200 (room temperature, 30min). Negative control was used by secondary antibody only.

This product is suitable for in-vitro studies under the RESEARCH USE ONLY [RUO] licence. This product must not be used as for diagnostic or other medical purposes.

St John's Laboratory Ltd, Knowledge Dock Business Centre, University Way, London, E16 2RD | Tel: 0208 223 3081