

Anti-TSC2 antibody (920-1000) (STJ96141)

STJ96141

GENERAL INFORMATION

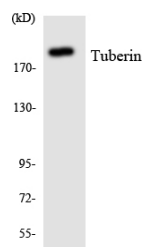
Product Type	Primary antibodies
Short Description	Rabbit polyclonal antibody anti-Tuberin (920-1000) is suitable for use in Western Blot, Immunohistochemistry, Immunofluorescence and ELISA research applications.
Applications	WB, IHC-P, IF-P, ELISA
Host/Source	Rabbit
Reactivity	Human, Mouse, Rat

PRODUCT PROPERTIES

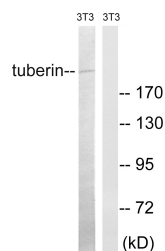
Clonality	Polyclonal
Clone ID	
Concentration	1 mg/mL
Conjugation	Unconjugated
Purification	The antibody was affinity-purified from rabbit anti-serum by affinity-chromatography.
Dilution Range	WB 1:500-1:2000 IHC 1:100-1:300 ELISA 1:20000
Formulation	PBS, 50% Glycerol, 0.5% BSA and 0.02% Sodium Azide.
Isotype	IgG
Storage Instruction	Store at -20°C for up to 1 year from the date of receipt, and avoid repeat freeze-thaw cycles.

TARGET INFORMATION

Gene ID	7249
Gene Symbol	TSC2
Uniprot ID	TSC2_HUMAN
Immunogen	The antiserum was produced against synthesized peptide derived from human Tuberin at amino acid range 947-996
Immunogen Region	920-1000
Specificity	TSC2 polyclonal antibody (Tuberin) binds to endogenous Tuberin at the amino acid region 920-1000.
Immunogen Sequence	



Western blot analysis of the lysates from COLO205 cells using Tuberin antibody.



Western blot analysis of lysates from NIH/3T3 cells, using Tuberin Antibody. The lane on the right is blocked with the synthesized peptide.