

Anti-TSC2 antibody (1400-1480) (STJ96140)

STJ96140

GENERAL INFORMATION

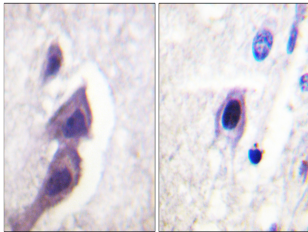
Product Type	Primary antibodies
Short Description	Rabbit polyclonal antibody anti-Tuberin (1400-1480) is suitable for use in Immunohistochemistry, Immunofluorescence and ELISA research applications.
Applications	IHC-P, IF-P, ELISA
Host/Source	Rabbit
Reactivity	Human, Mouse, Rat

PRODUCT PROPERTIES

Clonality	Polyclonal
Clone ID	
Concentration	1 mg/mL
Conjugation	Unconjugated
Purification	The antibody was affinity-purified from rabbit anti-serum by affinity-chromatography.
Dilution Range	IHC 1:100-1:300 ELISA 1:5000
Formulation	PBS, 50% Glycerol, 0.5% BSA and 0.02% Sodium Azide.
Isotype	IgG
Storage	Store at -20°C for up to 1 year from the date of receipt, and avoid repeat freeze-thaw cycles.
Instruction	

TARGET INFORMATION

Gene ID	7249
Gene Symbol	TSC2
Uniprot ID	TSC2_HUMAN
Immunogen	The antiserum was produced against synthesized peptide derived from human Tuberin/TSC2 at amino acid range 1428-1477
Immunogen Region	1400-1480
Specificity	TSC2 polyclonal antibody (Tuberin) binds to endogenous Tuberin at the amino acid region 1400-1480.
Immunogen Sequence	



Immunohistochemistry analysis of paraffin-embedded human brain tissue, using Tuberin/TSC2 Antibody. The picture on the right is blocked with the synthesized peptide.

This product is suitable for in-vitro studies under the RESEARCH USE ONLY [RUO] licence. This product must not be used as for diagnostic or other medical purposes.
St John's Laboratory Ltd, Knowledge Dock Business Centre, University Way, London, E16 2RD | Tel: 0208 223 3081