

Anti-PHLDA2 antibody (50-130 Internal) (STJ96131)

STJ96131

GENERAL INFORMATION

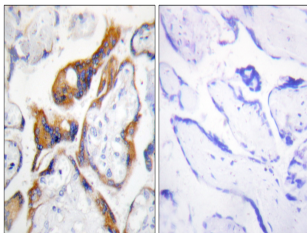
Product Type	Primary antibodies
Short Description	Rabbit polyclonal antibody anti-Pleckstrin Homology-Like Domain Family A Member 2 (50-130 Internal) is suitable for use in Immunohistochemistry, Immunofluorescence and ELISA research applications.
Applications	IHC-P, IF-P, ELISA
Host/Source	Rabbit
Reactivity	Human, Rat, Mouse

PRODUCT PROPERTIES

Clonality	Polyclonal
Clone ID	
Concentration	1 mg/mL
Conjugation	Unconjugated
Purification	The antibody was affinity-purified from rabbit anti-serum by affinity-chromatography.
Dilution	IHC 1:100-1:300
Range	ELISA 1:20000
Formulation	PBS, 50% Glycerol, 0.5% BSA and 0.02% Sodium Azide.
Isotype	IgG
Storage	Store at -20°C for up to 1 year from the date of receipt, and avoid repeat freeze-thaw cycles.
Instruction	

TARGET INFORMATION

Gene ID	7262
Gene Symbol	PHLDA2
Uniprot ID	PHLA2_HUMAN
Immunogen	The antiserum was produced against synthesized peptide derived from human PHLDA2 at amino acid range 81-130
Immunogen Region	50-130 Internal
Specificity	PHLDA2 polyclonal antibody (Pleckstrin Homology-Like Domain Family A Member 2) binds to endogenous Pleckstrin Homology-Like Domain Family A Member 2 at the amino acid region 50-130 Internal.
Immunogen Sequence	



Immunohistochemistry analysis of paraffin-embedded human placenta, using PHLA2 Antibody. The picture on the right is blocked with the synthesized peptide.