

Anti-CADM1 antibody (370-450 C-Term) (STJ96129)

STJ96129

GENERAL INFORMATION

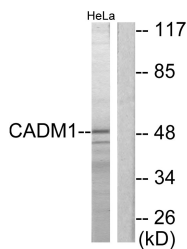
Product Type	Primary antibodies
Short Description	Rabbit polyclonal antibody anti-Cell Adhesion Molecule 1 (370-450 C-Term) is suitable for use in Western Blot, Immunofluorescence, Immunocytochemistry and ELISA research applications.
Applications	WB, IF, ICC, ELISA
Host/Source	Rabbit
Reactivity	Human, Mouse

PRODUCT PROPERTIES

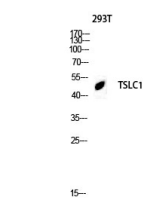
Clonality	Polyclonal
Clone ID	
Concentration	1 mg/mL
Conjugation	Unconjugated
Purification	The antibody was affinity-purified from rabbit anti-serum by affinity-chromatography.
Dilution Range	WB 1:500-1:2000 IF 1:200-1:1000 ELISA 1:20000
Formulation	PBS, 50% Glycerol, 0.5% BSA and 0.02% Sodium Azide.
Isotype	IgG
Storage Instruction	Store at -20°C for up to 1 year from the date of receipt, and avoid repeat freeze-thaw cycles.

TARGET INFORMATION

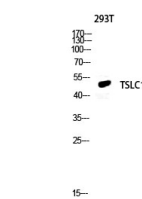
Gene ID	23705
Gene Symbol	CADM1
Uniprot ID	CADM1_HUMAN
Immunogen	The antiserum was produced against synthesized peptide derived from human CADM1 at amino acid range 393-442
Immunogen Region	370-450 C-Term
Specificity	CADM1 polyclonal antibody (Cell Adhesion Molecule 1) binds to endogenous Cell Adhesion Molecule 1 at the amino acid region 370-450 C-Term.
Immunogen Sequence	



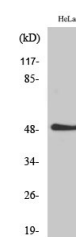
Western blot analysis of lysates from HeLa cells, using CADM1 Antibody. The lane on the right is blocked with the synthesized peptide.



Western blot analysis of 293T lysis using TSLC1 antibody. Antibody was diluted at 1:500. Secondary antibody was diluted at 1:20000



Western blot analysis of 293T lysis using TSLC1 antibody. Antibody was diluted at 1:500. Secondary antibody was diluted at 1:20000



Western blot analysis of various cells using TSLC1 Polyclonal Antibody diluted at 1: 500. Secondary antibody was diluted at 1:20000

This product is suitable for in-vitro studies under the RESEARCH USE ONLY [RUO] licence. This product must not be used as for diagnostic or other medical purposes.
St John's Laboratory Ltd, Knowledge Dock Business Centre, University Way, London, E16 2RD | Tel: 0208 223 3081