

Anti-TSHZ1 antibody (820-900 C-Term) (STJ96127)

STJ96127

GENERAL INFORMATION

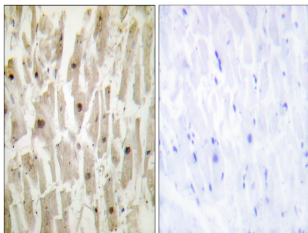
Product Type	Primary antibodies
Short Description	Rabbit polyclonal antibody anti-Teashirt Homolog 1 (820-900 C-Term) is suitable for use in Immunohistochemistry, Immunofluorescence and ELISA research applications.
Applications	IHC-P, IF-P, ELISA
Host/Source	Rabbit
Reactivity	Human, Mouse

PRODUCT PROPERTIES

Clonality	Polyclonal
Clone ID	
Concentration	1 mg/mL
Conjugation	Unconjugated
Purification	The antibody was affinity-purified from rabbit anti-serum by affinity-chromatography.
Dilution Range	IHC 1:100-1:300 ELISA 1:20000
Formulation	PBS, 50% Glycerol, 0.5% BSA and 0.02% Sodium Azide.
Isotype	IgG
Storage	Store at -20°C for up to 1 year from the date of receipt, and avoid repeat freeze-thaw cycles.
Instruction	

TARGET INFORMATION

Gene ID	10194
Gene Symbol	TSHZ1
Uniprot ID	TSH1_HUMAN
Immunogen	The antiserum was produced against synthesized peptide derived from human TSH1 at amino acid range 851-900
Immunogen Region	820-900 C-Term
Specificity	TSHZ1 polyclonal antibody (Teashirt Homolog 1) binds to endogenous Teashirt Homolog 1 at the amino acid region 820-900 C-Term.
Immunogen Sequence	



Immunohistochemistry analysis of paraffin-embedded human heart tissue, using TSH1 Antibody. The picture on the right is blocked with the synthesized peptide.