

Anti-LY6E antibody (30-110 Internal) (STJ96122)

STJ96122

GENERAL INFORMATION

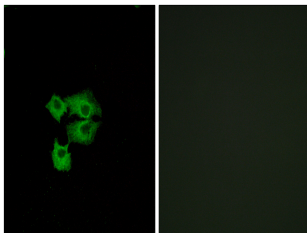
Product Type	Primary antibodies
Short Description	Rabbit polyclonal antibody anti-Lymphocyte antigen 6e (30-110 Internal) is suitable for use in Immunofluorescence, Immunocytochemistry and ELISA research applications.
Applications	IF, ICC, ELISA
Host/Source	Rabbit
Reactivity	Human, Rat, Mouse

PRODUCT PROPERTIES

Clonality	Polyclonal
Clone ID	
Concentration	1 mg/mL
Conjugation	Unconjugated
Purification	The antibody was affinity-purified from rabbit anti-serum by affinity-chromatography.
Dilution Range	IF 1:200-1:1000 ELISA 1:20000
Formulation	PBS, 50% Glycerol, 0.5% BSA and 0.02% Sodium Azide.
Isotype	IgG
Storage	Store at -20°C for up to 1 year from the date of receipt, and avoid repeat freeze-thaw cycles.
Instruction	

TARGET INFORMATION

Gene ID	4061
Gene Symbol	LY6E
Uniprot ID	LY6E_HUMAN
Immunogen	The antiserum was produced against synthesized peptide derived from human LY6E at amino acid range 17-66
Immunogen Region	30-110 Internal
Specificity	LY6E polyclonal antibody (Lymphocyte Antigen 6e) binds to endogenous Lymphocyte Antigen 6e at the amino acid region 30-110 Internal.
Immunogen Sequence	



Immunofluorescence analysis of A549 cells, using LY6E Antibody. The picture on the right is blocked with the synthesized peptide.