

Anti-THRB antibody (30-110 N-Term) (STJ96121)

STJ96121

GENERAL INFORMATION

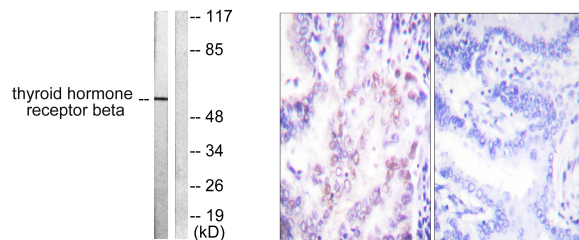
Product Type	Primary antibodies
Short Description	Rabbit polyclonal antibody anti-Thyroid Hormone Receptor Beta (30-110 N-Term) is suitable for use in Western Blot, Immunohistochemistry, Immunofluorescence and ELISA research applications.
Applications	WB, IHC-P, IF-P, ELISA
Host/Source	Rabbit
Reactivity	Human, Mouse, Rat

PRODUCT PROPERTIES

Clonality	Polyclonal
Clone ID	
Concentration	1 mg/mL
Conjugation	Unconjugated
Purification	The antibody was affinity-purified from rabbit anti-serum by affinity-chromatography.
Dilution Range	WB 1:500-1:2000 IHC 1:100-1:300 ELISA 1:20000
Formulation	PBS, 50% Glycerol, 0.5% BSA and 0.02% Sodium Azide.
Isotype	IgG
Storage Instruction	Store at -20°C for up to 1 year from the date of receipt, and avoid repeat freeze-thaw cycles.

TARGET INFORMATION

Gene ID	7068
Gene Symbol	THRB
Uniprot ID	THB_HUMAN
Immunogen	The antiserum was produced against synthesized peptide derived from human Thyroid Hormone Receptor beta at amino acid range 11-60
Immunogen Region	30-110 N-Term
Specificity	THRB polyclonal antibody (Thyroid Hormone Receptor Beta) binds to endogenous Thyroid Hormone Receptor Beta at the amino acid region 30-110 N-Term.
Immunogen Sequence	



Western blot analysis of lysates from LOVO cells, using Thyroid Hormone Receptor beta Antibody. The lane on the right is blocked with the synthesized peptide.

Immunohistochemistry analysis of paraffin-embedded human lung carcinoma tissue, using Thyroid Hormone Receptor beta Antibody. The picture on the right is blocked with the synthesized peptide.

This product is suitable for in-vitro studies under the RESEARCH USE ONLY [RUO] licence. This product must not be used as for diagnostic or other medical purposes.
St John's Laboratory Ltd, Knowledge Dock Business Centre, University Way, London, E16 2RD | Tel: 0208 223 3081