

Anti-PRSS1 antibody (Internal) (STJ96118)

STJ96118

GENERAL INFORMATION

Product Type	Primary antibodies
Short Description	Rabbit polyclonal antibody anti-Trypsin-1 (Internal) is suitable for use in Western Blot and ELISA research applications.
Applications	WB, ELISA
Host/Source	Rabbit
Reactivity	Human, Rat, Mouse

PRODUCT PROPERTIES

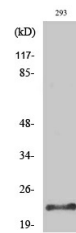
Clonality	Polyclonal
Clone ID	
Concentration	1 mg/mL
Conjugation	Unconjugated
Purification	The antibody was affinity-purified from rabbit anti-serum by affinity-chromatography.
Dilution Range	WB 1:500-1:2000 ELISA 1:10000
Formulation	PBS, 50% Glycerol, 0.5% BSA and 0.02% Sodium Azide.
Isotype	IgG
Storage Instruction	Store at -20°C for up to 1 year from the date of receipt, and avoid repeat freeze-thaw cycles.

TARGET INFORMATION

Gene ID	5644
Gene Symbol	PRSS1
Uniprot ID	TRY1_HUMAN
Immunogen	The antiserum was produced against synthesized peptide derived from human Trypsin-1 at amino acid range 60-109
Immunogen Region	Internal
Specificity	PRSS1 polyclonal antibody (Trypsin-1) binds to endogenous Trypsin-1 at the amino acid region Internal.
Immunogen Sequence	



Western blot analysis of lysate from 293 cells, using Trypsin-1 antibody.



Western blot analysis of various cells using Trypsin-1 Polyclonal Antibody diluted at 1: 500. Secondary antibody was diluted at 1:20000

This product is suitable for in-vitro studies under the RESEARCH USE ONLY [RUO] licence. This product must not be used as for diagnostic or other medical purposes.
St John's Laboratory Ltd, Knowledge Dock Business Centre, University Way, London, E16 2RD | Tel: 0208 223 3081