

Anti-TXNRD2 antibody (440-520 C-Term) (STJ96117)

STJ96117

GENERAL INFORMATION

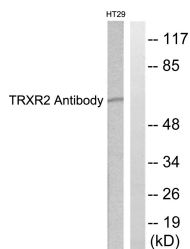
Product Type	Primary antibodies
Short Description	Rabbit polyclonal antibody anti-Thioredoxin Reductase 2-Mitochondrial (440-520 C-Term) is suitable for use in Western Blot, Immunohistochemistry, Immunofluorescence and ELISA research applications.
Applications	WB, IHC-P, IF-P, ELISA
Host/Source	Rabbit
Reactivity	Human, Mouse, Rat

PRODUCT PROPERTIES

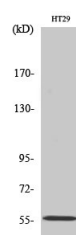
Clonality	Polyclonal
Clone ID	
Concentration	1 mg/mL
Conjugation	Unconjugated
Purification	The antibody was affinity-purified from rabbit anti-serum by affinity-chromatography.
Dilution Range	WB 1:500-1:2000 IHC 1:100-1:300 ELISA 1:10000
Formulation	PBS, 50% Glycerol, 0.5% BSA and 0.02% Sodium Azide.
Isotype	IgG
Storage Instruction	Store at -20°C for up to 1 year from the date of receipt, and avoid repeat freeze-thaw cycles.

TARGET INFORMATION

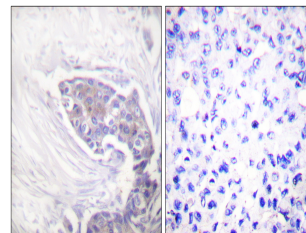
Gene ID	10587
Gene Symbol	TXNRD2
Uniprot ID	TRXR2_HUMAN
Immunogen	The antiserum was produced against synthesized peptide derived from human TRXR2 at amino acid range 471-520
Immunogen Region	440-520 C-Term
Specificity	TXNRD2 polyclonal antibody (Thioredoxin Reductase 2-Mitochondrial) binds to endogenous Thioredoxin Reductase 2-Mitochondrial at the amino acid region 440-520 C-Term.
Immunogen Sequence	



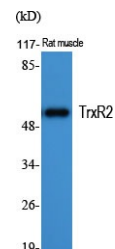
Western blot analysis of lysates from HT29 cells, using TRXR2 Antibody. The lane on the right is blocked with the synthesized peptide.



Western blot analysis of HT29 cells using TrxR2 Polyclonal Antibody. Secondary antibody was diluted at 1:20000



Immunohistochemistry analysis of paraffin-embedded human breast carcinoma tissue, using TRXR2 Antibody. The picture on the right is blocked with the synthesized peptide.



Western blot analysis of various cells using TrxR2 Polyclonal Antibody. Secondary antibody was diluted at 1:20000

This product is suitable for in-vitro studies under the RESEARCH USE ONLY [RUO] licence. This product must not be used as for diagnostic or other medical purposes.
St John's Laboratory Ltd, Knowledge Dock Business Centre, University Way, London, E16 2RD | Tel: 0208 223 3081