

Anti-DCT antibody (30-110 Internal) (STJ96115)

STJ96115

GENERAL INFORMATION

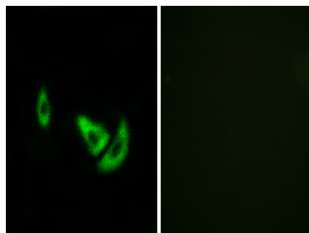
Product Type	Primary antibodies
Short Description	Rabbit polyclonal antibody anti-L-Dopachrome Tautomerase (30-110 Internal) is suitable for use in Western Blot, Immunohistochemistry, Immunofluorescence, Immunocytochemistry and ELISA research applications.
Applications	WB, IHC-P, IF, ICC, ELISA
Host/Source	Rabbit
Reactivity	Human, Mouse

PRODUCT PROPERTIES

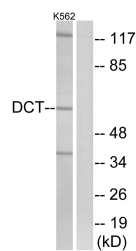
Clonality	Polyclonal
Clone ID	
Concentration	1 mg/mL
Conjugation	Unconjugated
Purification	The antibody was affinity-purified from rabbit anti-serum by affinity-chromatography.
Dilution Range	WB 1:500-1:2000 IF 1:200-1:1000 ELISA 1:40000
Formulation	PBS, 50% Glycerol, 0.5% BSA and 0.02% Sodium Azide.
Isotype	IgG
Storage Instruction	Store at -20°C for up to 1 year from the date of receipt, and avoid repeat freeze-thaw cycles.

TARGET INFORMATION

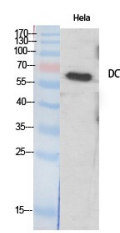
Gene ID	1638
Gene Symbol	DCT
Uniprot ID	TYRP2_HUMAN
Immunogen	The antiserum was produced against synthesized peptide derived from human DCT at amino acid range 51-100
Immunogen Region	30-110 Internal
Specificity	DCT polyclonal antibody (L-Dopachrome Tautomerase) binds to endogenous L-Dopachrome Tautomerase at the amino acid region 30-110 Internal.
Immunogen Sequence	



Immunofluorescence analysis of A549 cells, using DCT Antibody. The picture on the right is blocked with the synthesized peptide.



Western blot analysis of lysates from K562 cells, using DCT Antibody. The lane on the right is blocked with the synthesized peptide.



Western blot analysis of various cells using TRP2 Polyclonal Antibody diluted at 1:500. Secondary antibody was diluted at 1:20000

This product is suitable for in-vitro studies under the RESEARCH USE ONLY [RUO] licence. This product must not be used as for diagnostic or other medical purposes.
St John's Laboratory Ltd, Knowledge Dock Business Centre, University Way, London, E16 2RD | Tel: 0208 223 3081