

Anti-TACSTD2 antibody (100-180 Internal) (STJ96110)

STJ96110

GENERAL INFORMATION

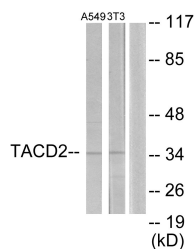
Product Type	Primary antibodies
Short Description	Rabbit polyclonal antibody anti-Tumor-Associated Calcium Signal Transducer 2 (100-180 Internal) is suitable for use in Western Blot, Immunohistochemistry, Immunofluorescence and ELISA research applications.
Applications	WB, IHC-P, IF-P, ELISA
Host/Source	Rabbit
Reactivity	Human, Mouse, Rat

PRODUCT PROPERTIES

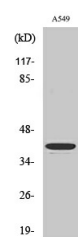
Clonality	Polyclonal
Clone ID	
Concentration	1 mg/mL
Conjugation	Unconjugated
Purification	The antibody was affinity-purified from rabbit anti-serum by affinity-chromatography.
Dilution Range	WB 1:500-1:2000 IHC 1:100-1:300 ELISA 1:20000
Formulation	PBS, 50% Glycerol, 0.5% BSA and 0.02% Sodium Azide.
Isotype	IgG
Storage Instruction	Store at 20°C for up to 1 year from the date of receipt, and avoid repeat freeze-thaw cycles.

TARGET INFORMATION

Gene ID	4070
Gene Symbol	TACSTD2
Uniprot ID	TACD2_HUMAN
Immunogen	The antiserum was produced against synthesized peptide derived from human TACD2 at amino acid range 131-180
Immunogen Region	100-180 Internal
Specificity	TACSTD2 polyclonal antibody (Tumor-Associated Calcium Signal Transducer 2) binds to endogenous Tumor-Associated Calcium Signal Transducer 2 at the amino acid region 100-180 Internal.
Immunogen Sequence	



Western blot analysis of lysates from A549 and NIH/3T3 cells, using TACD2 Antibody. The lane on the right is blocked with the synthesized peptide.



Western blot analysis of various cells using TROP-2 Polyclonal Antibody. Secondary antibody was diluted at 1:20000

This product is suitable for in-vitro studies under the RESEARCH USE ONLY [RUO] licence. This product must not be used as for diagnostic or other medical purposes.
St John's Laboratory Ltd, Knowledge Dock Business Centre, University Way, London, E16 2RD | Tel: 0208 223 3081