

Anti-MED13 antibody (650-730 Internal) (STJ96092)

STJ96092

GENERAL INFORMATION

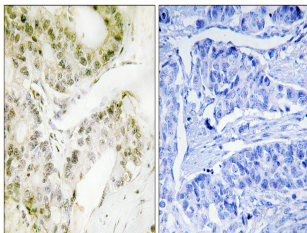
Product Type	Primary antibodies
Short Description	Rabbit polyclonal antibody anti-Mediator Of Rna Polymerase Ii Transcription Subunit 13 (650-730 Internal) is suitable for use in Immunohistochemistry, Immunofluorescence and ELISA research applications.
Applications	IHC-P, IF-P, ELISA
Host/Source	Rabbit
Reactivity	Human, Rat, Mouse

PRODUCT PROPERTIES

Clonality	Polyclonal
Clone ID	
Concentration	1 mg/mL
Conjugation	Unconjugated
Purification	The antibody was affinity-purified from rabbit anti-serum by affinity-chromatography.
Dilution	IHC 1:100-1:300
Range	ELISA 1:40000
Formulation	PBS, 50% Glycerol, 0.5% BSA and 0.02% Sodium Azide.
Isotype	IgG
Storage	Store at -20°C for up to 1 year from the date of receipt, and avoid repeat freeze-thaw cycles.
Instruction	

TARGET INFORMATION

Gene ID	9969
Gene Symbol	MED13
Uniprot ID	MED13_HUMAN
Immunogen	The antiserum was produced against synthesized peptide derived from human MED13 at amino acid range 681-730
Immunogen Region	650-730 Internal
Specificity	MED13 polyclonal antibody (Mediator Of Rna Polymerase Ii Transcription Subunit 13) binds to endogenous Mediator Of Rna Polymerase Ii Transcription Subunit 13 at the amino acid region 650-730 Internal.
Immunogen Sequence	



Immunohistochemistry analysis of paraffin-embedded human lung carcinoma, using MED13 Antibody. The picture on the right is blocked with the synthesized peptide.