

Anti-MED12 antibody (580-660 Internal) (STJ96091)

STJ96091

GENERAL INFORMATION

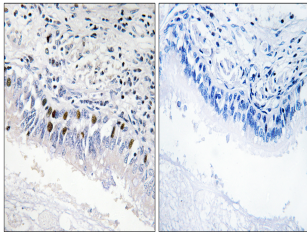
Product Type	Primary antibodies
Short Description	Rabbit polyclonal antibody anti-Mediator Of Rna Polymerase Ii Transcription Subunit 12 (580-660 Internal) is suitable for use in Immunohistochemistry, Immunofluorescence, Western Blot and ELISA research applications.
Applications	IHC-P, IF-P, WB, ELISA
Host/Source	Rabbit
Reactivity	Human, Rat, Mouse

PRODUCT PROPERTIES

Clonality	Polyclonal
Clone ID	
Concentration	1 mg/mL
Conjugation	Unconjugated
Purification	The antibody was affinity-purified from rabbit anti-serum by affinity-chromatography.
Dilution Range	WB 1:500-2000 IHC 1:100-1:300 ELISA 1:5000
Formulation	PBS, 50% Glycerol, 0.5% BSA and 0.02% Sodium Azide.
Isotype	IgG
Storage Instruction	Store at -20°C for up to 1 year from the date of receipt, and avoid repeat freeze-thaw cycles.

TARGET INFORMATION

Gene ID	9968
Gene Symbol	MED12
Uniprot ID	MED12_HUMAN
Immunogen	The antiserum was produced against synthesized peptide derived from human MED12 at amino acid range 611-660
Immunogen Region	580-660 Internal
Specificity	MED12 polyclonal antibody (Mediator Of Rna Polymerase Ii Transcription Subunit 12) binds to endogenous Mediator Of Rna Polymerase Ii Transcription Subunit 12 at the amino acid region 580-660 Internal.
Immunogen Sequence	



Immunohistochemistry analysis of paraffin-embedded human lung carcinoma, using MED12 Antibody. The picture on the right is blocked with the synthesized peptide.