

Anti-MED1 antibody (1400-1480) (STJ96090)

STJ96090

GENERAL INFORMATION

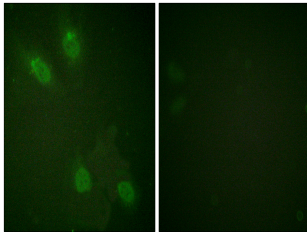
Product Type	Primary antibodies
Short Description	Rabbit polyclonal antibody anti-Mediator Of Rna Polymerase Ii Transcription Subunit 1 (1400-1480) is suitable for use in Western Blot, Immunofluorescence, Immunocytochemistry and ELISA research applications.
Applications	WB, IF, ICC, ELISA
Host/Source	Rabbit
Reactivity	Human, Mouse

PRODUCT PROPERTIES

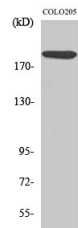
Clonality	Polyclonal
Clone ID	
Concentration	1 mg/mL
Conjugation	Unconjugated
Purification	The antibody was affinity-purified from rabbit anti-serum by affinity-chromatography.
Dilution Range	WB 1:500-1:2000 IF 1:200-1:1000 ELISA 1:10000
Formulation	PBS, 50% Glycerol, 0.5% BSA and 0.02% Sodium Azide.
Isotype	IgG
Storage Instruction	Store at -20°C for up to 1 year from the date of receipt, and avoid repeat freeze-thaw cycles.

TARGET INFORMATION

Gene ID	5469
Gene Symbol	MED1
Uniprot ID	MED1_HUMAN
Immunogen	The antiserum was produced against synthesized peptide derived from human PPAR-BP at amino acid range 1423-1472
Immunogen Region	1400-1480
Specificity	MED1 polyclonal antibody (Mediator Of Rna Polymerase Ii Transcription Subunit 1) binds to endogenous Mediator Of Rna Polymerase Ii Transcription Subunit 1 at the amino acid region 1400-1480.
Immunogen Sequence	



Immunofluorescence analysis of HeLa cells, using PPAR-BP Antibody. The picture on the right is blocked with the synthesized peptide.



Western blot analysis of various cells using TRAP220 Polyclonal Antibody. Secondary antibody was diluted at 1:20000 cells nucleus extracted by Minute TM Cytoplasmic and Nuclear Fractionation kit (SC-003, Inventibiotech, MN, USA).

This product is suitable for in-vitro studies under the RESEARCH USE ONLY [RUO] licence. This product must not be used as for diagnostic or other medical purposes.
St John's Laboratory Ltd, Knowledge Dock Business Centre, University Way, London, E16 2RD | Tel: 0208 223 3081