

Anti-MED1 antibody (610-690 Internal) (STJ96089)

STJ96089

GENERAL INFORMATION

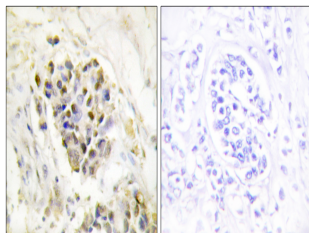
| | |
|--------------------------|---|
| Product Type | Primary antibodies |
| Short Description | Rabbit polyclonal antibody anti-Mediator Of Rna Polymerase Ii Transcription Subunit 1 (610-690 Internal) is suitable for use in Western Blot, Immunohistochemistry, Immunofluorescence and ELISA research applications. |
| Applications | WB, IHC-P, IF-P, ELISA |
| Host/Source | Rabbit |
| Reactivity | Human, Mouse |

PRODUCT PROPERTIES

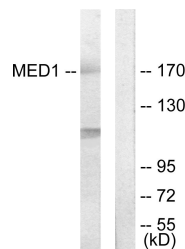
| | |
|----------------------------|--|
| Clonality | Polyclonal |
| Clone ID | |
| Concentration | 1 mg/mL |
| Conjugation | Unconjugated |
| Purification | The antibody was affinity-purified from rabbit anti-serum by affinity-chromatography. |
| Dilution Range | WB 1:500-1:2000 IHC 1:100-1:300 ELISA 1:10000 |
| Formulation | PBS, 50% Glycerol, 0.5% BSA and 0.02% Sodium Azide. |
| Isotype | IgG |
| Storage Instruction | Store at -20°C for up to 1 year from the date of receipt, and avoid repeat freeze-thaw cycles. |

TARGET INFORMATION

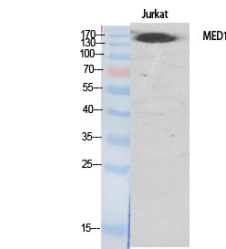
| | |
|---------------------------|---|
| Gene ID | 5469 |
| Gene Symbol | MED1 |
| Uniprot ID | MED1_HUMAN |
| Immunogen | The antiserum was produced against synthesized peptide derived from human MED1 at amino acid range 641-690 |
| Immunogen Region | 610-690 Internal |
| Specificity | MED1 polyclonal antibody (Mediator Of Rna Polymerase Ii Transcription Subunit 1) binds to endogenous Mediator Of Rna Polymerase Ii Transcription Subunit 1 at the amino acid region 610-690 Internal. |
| Immunogen Sequence | |



Immunohistochemistry analysis of paraffin-embedded human breast carcinoma tissue, using MED1 Antibody. The picture on the right is blocked with the synthesized peptide.



Western blot analysis of lysates from Jurkat cells, using MED1 Antibody. The lane on the right is blocked with the synthesized peptide.



Western blot analysis of various cells using TRAP220 Polyclonal Antibody diluted at 1:500. Secondary antibody was diluted at 1:20000 cells nucleus extracted by Minute TM Cytoplasmic and Nuclear Fractionation kit (SC-003, Inventibiotec, MN, USA).

This product is suitable for in-vitro studies under the RESEARCH USE ONLY [RUO] licence. This product must not be used as for diagnostic or other medical purposes.
St John's Laboratory Ltd, Knowledge Dock Business Centre, University Way, London, E16 2RD | Tel: 0208 223 3081