

Anti-TRAF6 antibody (Internal) (STJ96085)

STJ96085

GENERAL INFORMATION

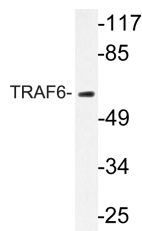
Product Type	Primary antibodies
Short Description	Rabbit polyclonal antibody anti-Tnf Receptor-Associated Factor 6 (Internal) is suitable for use in Western Blot, Immunohistochemistry, Immunofluorescence and ELISA research applications.
Applications	WB, IHC-P, IF-P, ELISA
Host/Source	Rabbit
Reactivity	Human, Mouse, Rat

PRODUCT PROPERTIES

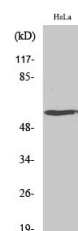
Clonality	Polyclonal
Clone ID	
Concentration	1 mg/mL
Conjugation	Unconjugated
Purification	The antibody was affinity-purified from rabbit anti-serum by affinity-chromatography.
Dilution Range	WB 1:500-1:2000 IHC 1:100-1:300 ELISA 1:40000
Formulation	PBS, 50% Glycerol, 0.5% BSA and 0.02% Sodium Azide.
Isotype	IgG
Storage Instruction	Store at -20°C for up to 1 year from the date of receipt, and avoid repeat freeze-thaw cycles.

TARGET INFORMATION

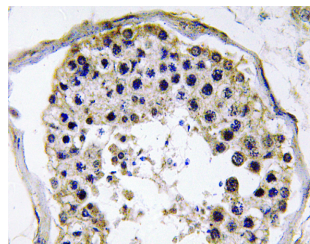
Gene ID	7189
Gene Symbol	TRAF6
Uniprot ID	TRAF6_HUMAN
Immunogen	The antiserum was produced against synthesized peptide derived from human TRAF6 at amino acid range 105-154
Immunogen Region	Internal
Specificity	TRAF6 polyclonal antibody (Tnf Receptor-Associated Factor 6) binds to endogenous Tnf Receptor-Associated Factor 6 at the amino acid region Internal.
Immunogen Sequence	



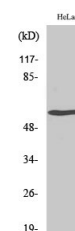
Western blot analysis of lysate from HeLa cells, using TRAF6 antibody.



Western blot analysis of HeLa cells using TRAF6 Polyclonal Antibody diluted at 1:1000. Secondary antibody was diluted at 1:20000



Immunohistochemistry analysis of TRAF6 antibody in paraffin-embedded human testis tissue.



Western blot analysis of various cells using TRAF6 Polyclonal Antibody diluted at 1:1000. Secondary antibody was diluted at 1:20000

This product is suitable for in-vitro studies under the RESEARCH USE ONLY [RUO] licence. This product must not be used as for diagnostic or other medical purposes.
St John's Laboratory Ltd, Knowledge Dock Business Centre, University Way, London, E16 2RD | Tel: 0208 223 3081