

Anti-TRAF2 antibody (Internal) (STJ96082)

STJ96082

GENERAL INFORMATION

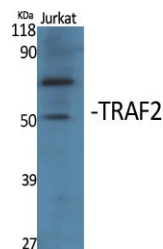
Product Type	Primary antibodies
Short Description	Rabbit polyclonal antibody anti-Tnf Receptor-Associated Factor 2 (Internal) is suitable for use in Western Blot, Immunohistochemistry, Immunofluorescence and ELISA research applications.
Applications	WB, IHC-P, IF-P, ELISA
Host/Source	Rabbit
Reactivity	Human, Rat, Mouse

PRODUCT PROPERTIES

Clonality	Polyclonal
Clone ID	
Concentration	1 mg/mL
Conjugation	Unconjugated
Purification	The antibody was affinity-purified from rabbit anti-serum by affinity-chromatography.
Dilution Range	WB 1:500-1:2000 IHC 1:100-1:300 ELISA 1:10000
Formulation	PBS, 50% Glycerol, 0.5% BSA and 0.02% Sodium Azide.
Isotype	IgG
Storage Instruction	Store at -20°C for up to 1 year from the date of receipt, and avoid repeat freeze-thaw cycles.

TARGET INFORMATION

Gene ID	7186
Gene Symbol	TRAF2
Uniprot ID	TRAF2_HUMAN
Immunogen	Synthesized peptide derived from the Internal region of human TRAF2.
Immunogen Region	Internal
Specificity	TRAF2 polyclonal antibody (Tnf Receptor-Associated Factor 2) binds to endogenous Tnf Receptor-Associated Factor 2 at the amino acid region Internal.
Immunogen Sequence	



Western blot analysis of various cells using TRAF2 Polyclonal Antibody. Secondary antibody was diluted at 1:20000