

## Anti-KCNK4 antibody (310-390 C-Term) (STJ96079)

STJ96079

### GENERAL INFORMATION

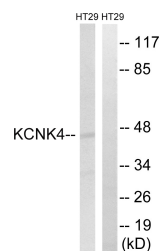
<b>Product Type</b>	Primary antibodies
<b>Short Description</b>	Rabbit polyclonal antibody anti-Potassium Channel Subfamily K Member 4 (310-390 C-Term) is suitable for use in Western Blot and ELISA research applications.
<b>Applications</b>	WB, ELISA
<b>Host/Source</b>	Rabbit
<b>Reactivity</b>	Human, Mouse

### PRODUCT PROPERTIES

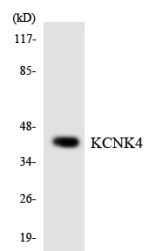
<b>Clonality</b>	Polyclonal
<b>Clone ID</b>	
<b>Concentration</b>	1 mg/mL
<b>Conjugation</b>	Unconjugated
<b>Purification</b>	The antibody was affinity-purified from rabbit anti-serum by affinity-chromatography.
<b>Dilution Range</b>	WB 1:500-1:2000 ELISA 1:40000
<b>Formulation</b>	PBS, 50% Glycerol, 0.5% BSA and 0.02% Sodium Azide.
<b>Isotype</b>	IgG
<b>Storage</b>	Store at -20°C for up to 1 year from the date of receipt, and avoid repeat freeze-thaw cycles.
<b>Instruction</b>	

### TARGET INFORMATION

<b>Gene ID</b>	50801
<b>Gene Symbol</b>	KCNK4
<b>Uniprot ID</b>	KCNK4_HUMAN
<b>Immunogen</b>	The antiserum was produced against synthesized peptide derived from human KCNK4 at amino acid range 332-381
<b>Immunogen Region</b>	310-390 C-Term
<b>Specificity</b>	KCNK4 polyclonal antibody (Potassium Channel Subfamily K Member 4) binds to endogenous Potassium Channel Subfamily K Member 4 at the amino acid region 310-390 C-Term.
<b>Immunogen Sequence</b>	



Western blot analysis of lysates from HT-29 cells, using KCNK4 Antibody. The lane on the right is blocked with the synthesized peptide.



Western blot analysis of the lysates from HUVEC cells using KCNK4 antibody.



Western blot analysis of various cells using TRAAK Polyclonal Antibody. Secondary antibody was diluted at 1:20000

This product is suitable for in-vitro studies under the RESEARCH USE ONLY [RUO] licence. This product must not be used as for diagnostic or other medical purposes.  
St John's Laboratory Ltd, Knowledge Dock Business Centre, University Way, London, E16 2RD | Tel: 0208 223 3081