

## Anti-TP53INP2 antibody (1-80 N-Term) (STJ96071)

STJ96071

### GENERAL INFORMATION

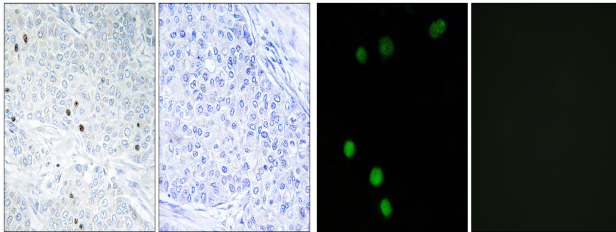
<b>Product Type</b>	Primary antibodies
<b>Short Description</b>	Rabbit polyclonal antibody anti-Tumor Protein P53-Inducible Nuclear Protein 2 (1-80 N-Term) is suitable for use in Immunohistochemistry, Immunofluorescence, Immunocytochemistry and ELISA research applications.
<b>Applications</b>	IHC-P, IF, ICC, ELISA
<b>Host/Source</b>	Rabbit
<b>Reactivity</b>	Human, Mouse, Rat

### PRODUCT PROPERTIES

<b>Clonality</b>	Polyclonal
<b>Clone ID</b>	
<b>Concentration</b>	1 mg/mL
<b>Conjugation</b>	Unconjugated
<b>Purification</b>	The antibody was affinity-purified from rabbit anti-serum by affinity-chromatography.
<b>Dilution Range</b>	IHC 1:100-1:300 IF 1:200-1:1000 ELISA 1:10000
<b>Formulation</b>	PBS, 50% Glycerol, 0.5% BSA and 0.02% Sodium Azide.
<b>Isotype</b>	IgG
<b>Storage Instruction</b>	Store at -20°C for up to 1 year from the date of receipt, and avoid repeat freeze-thaw cycles.

### TARGET INFORMATION

<b>Gene ID</b>	58476
<b>Gene Symbol</b>	TP53INP2
<b>Uniprot ID</b>	T53I2_HUMAN
<b>Immunogen</b>	The antiserum was produced against synthesized peptide derived from human TP53INP2 at amino acid range 1-50
<b>Immunogen Region</b>	1-80 N-Term
<b>Specificity</b>	TP53INP2 polyclonal antibody (Tumor Protein P53-Inducible Nuclear Protein 2) binds to endogenous Tumor Protein P53-Inducible Nuclear Protein 2 at the amino acid region 1-80 N-Term.
<b>Immunogen Sequence</b>	



Immunohistochemistry analysis of paraffin-embedded human breast carcinoma tissue, using TP53INP2 Antibody. The picture on the right is blocked with the synthesized peptide.

Immunofluorescence analysis of MCF7 cells, using TP53INP2 Antibody. The picture on the right is blocked with the synthesized peptide.

This product is suitable for in-vitro studies under the RESEARCH USE ONLY [RUO] licence. This product must not be used as for diagnostic or other medical purposes.  
St John's Laboratory Ltd, Knowledge Dock Business Centre, University Way, London, E16 2RD | Tel: 0208 223 3081