

Anti-TOP3B antibody (30-110 N-Term) (STJ96063)

STJ96063

GENERAL INFORMATION

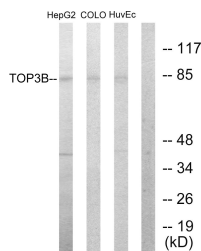
Product Type	Primary antibodies
Short Description	Rabbit polyclonal antibody anti-Dna Topoisomerase 3-Beta-1 (30-110 N-Term) is suitable for use in Western Blot, Immunohistochemistry, Immunofluorescence and ELISA research applications.
Applications	WB, IHC-P, IF-P, ELISA
Host/Source	Rabbit
Reactivity	Human, Mouse

PRODUCT PROPERTIES

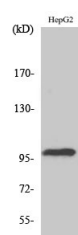
Clonality	Polyclonal
Clone ID	
Concentration	1 mg/mL
Conjugation	Unconjugated
Purification	The antibody was affinity-purified from rabbit anti-serum by affinity-chromatography.
Dilution Range	WB 1:500-1:2000 IHC 1:100-1:300 ELISA 1:20000
Formulation	PBS, 50% Glycerol, 0.5% BSA and 0.02% Sodium Azide.
Isotype	IgG
Storage Instruction	Store at -20°C for up to 1 year from the date of receipt, and avoid repeat freeze-thaw cycles.

TARGET INFORMATION

Gene ID	8940
Gene Symbol	TOP3B
Uniprot ID	TOP3B_HUMAN
Immunogen	The antiserum was produced against synthesized peptide derived from human TOP3B at amino acid range 51-100
Immunogen Region	30-110 N-Term
Specificity	TOP3B polyclonal antibody (Dna Topoisomerase 3-Beta-1) binds to endogenous Dna Topoisomerase 3-Beta-1 at the amino acid region 30-110 N-Term.
Immunogen Sequence	



Western blot analysis of lysates from HepG2, COLO205, and HUVEC cells, using TOP3B Antibody. The lane on the right is blocked with the synthesized peptide.



Western blot analysis of various cells using Topo III Beta-1 Polyclonal Antibody. Secondary antibody was diluted at 1:20000 cells nucleus extracted by Minute TM Cytoplasmic and Nuclear Fractionation Kit (SC-003, Inventibiotech, MN, USA).

This product is suitable for in-vitro studies under the RESEARCH USE ONLY [RUO] licence. This product must not be used as for diagnostic or other medical purposes.
St John's Laboratory Ltd, Knowledge Dock Business Centre, University Way, London, E16 2RD | Tel: 0208 223 3081