

Anti-TOMM20 antibody (30-110 Internal) (STJ96061)

STJ96061

GENERAL INFORMATION

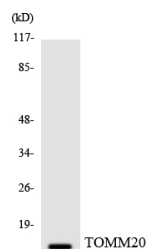
Product Type	Primary antibodies
Short Description	Rabbit polyclonal antibody anti-Mitochondrial Import Receptor Subunit Tom20 Homolog (30-110 Internal) is suitable for use in Western Blot and ELISA research applications.
Applications	WB, ELISA
Host/Source	Rabbit
Reactivity	Human, Mouse, Rat

PRODUCT PROPERTIES

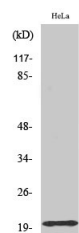
Clonality	Polyclonal
Clone ID	
Concentration	1 mg/mL
Conjugation	Unconjugated
Purification	The antibody was affinity-purified from rabbit anti-serum by affinity-chromatography.
Dilution	WB 1:500-1:2000
Range	ELISA 1:40000
Formulation	PBS, 50% Glycerol, 0.5% BSA and 0.02% Sodium Azide.
Isotype	IgG
Storage	Store at -20°C for up to 1 year from the date of receipt, and avoid repeat freeze-thaw cycles.
Instruction	

TARGET INFORMATION

Gene ID	9804
Gene Symbol	TOMM20
Uniprot ID	TOM20_HUMAN
Immunogen	The antiserum was produced against synthesized peptide derived from human TOMM20 at amino acid range 15-64
Immunogen Region	30-110 Internal
Specificity	TOMM20 polyclonal antibody (Mitochondrial Import Receptor Subunit Tom20 Homolog) binds to endogenous Mitochondrial Import Receptor Subunit Tom20 Homolog at the amino acid region 30-110 Internal.
Immunogen Sequence	



Western blot analysis of the lysates from HeLa cells using TOMM20 antibody.



Western blot analysis of various cells using Tom20 Polyclonal Antibody diluted at 1: 500. Secondary antibody was diluted at 1:20000

This product is suitable for in-vitro studies under the RESEARCH USE ONLY [RUO] licence. This product must not be used as for diagnostic or other medical purposes.
 St John's Laboratory Ltd, Knowledge Dock Business Centre, University Way, London, E16 2RD | Tel: 0208 223 3081