

Anti-TNFRSF1B antibody (350-430 C-Term) (STJ96053)

STJ96053

GENERAL INFORMATION

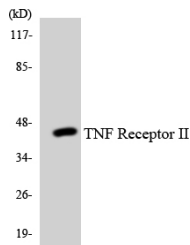
Product Type	Primary antibodies
Short Description	Rabbit polyclonal antibody anti-Tumor Necrosis Factor Receptor Superfamily Member 1b (350-430 C-Term) is suitable for use in Western Blot, Immunohistochemistry, Immunofluorescence, Immunocytochemistry and ELISA research applications.
Applications	WB, IHC-P, IF, ICC, ELISA
Host/Source	Rabbit
Reactivity	Human, Mouse, Rat

PRODUCT PROPERTIES

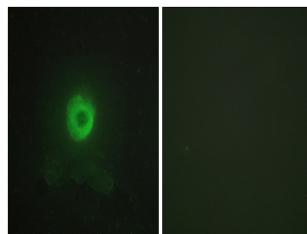
Clonality	Polyclonal
Clone ID	
Concentration	1 mg/mL
Conjugation	Unconjugated
Purification	The antibody was affinity-purified from rabbit anti-serum by affinity-chromatography.
Dilution Range	WB 1:500-1:2000 IHC 1:100-1:300 IF 1:200-1:1000 ELISA 1:20000
Formulation	PBS, 50% Glycerol, 0.5% BSA and 0.02% Sodium Azide.
Isotype	IgG
Storage Instruction	Store at -20°C for up to 1 year from the date of receipt, and avoid repeat freeze-thaw cycles.

TARGET INFORMATION

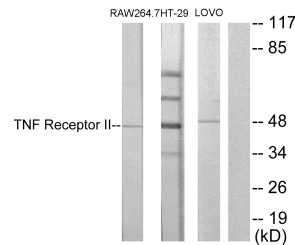
Gene ID	7133
Gene Symbol	TNFRSF1B
Uniprot ID	TNR1B_HUMAN
Immunogen	The antiserum was produced against synthesized peptide derived from human TNF Receptor II at amino acid range 376-425
Immunogen Region	350-430 C-Term
Specificity	TNFRSF1B polyclonal antibody (Tumor Necrosis Factor Receptor Superfamily Member 1b) binds to endogenous Tumor Necrosis Factor Receptor Superfamily Member 1b at the amino acid region 350-430 C-Term.
Immunogen Sequence	



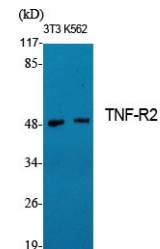
Western blot analysis of the lysates from HUVEC cells using TNF Receptor II antibody.



Immunofluorescence analysis of HeLa cells, using TNF Receptor II Antibody. The picture on the right is blocked with the synthesized peptide.



Western blot analysis of lysates from RAW264.7, HT-29, and LOVO cells, using TNF Receptor II Antibody. The lane on the right is blocked with the synthesized peptide.



Western blot analysis of various cells using TNF-R2 Polyclonal Antibody diluted at 1: 1000. Secondary antibody was diluted at 1:20000.

This product is suitable for in-vitro studies under the RESEARCH USE ONLY [RUO] licence. This product must not be used as for diagnostic or other medical purposes.
St John's Laboratory Ltd, Knowledge Dock Business Centre, University Way, London, E16 2RD | Tel: 0208 223 3081