

Anti-TMPRSS3 antibody (380-460 C-Term) (STJ96047)

STJ96047

GENERAL INFORMATION

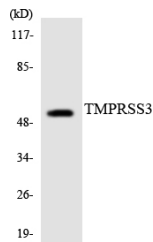
Product Type	Primary antibodies
Short Description	Rabbit polyclonal antibody anti-Transmembrane Protease Serine 3 (380-460 C-Term) is suitable for use in Western Blot, Immunohistochemistry, Immunofluorescence, Immunocytochemistry and ELISA research applications.
Applications	WB, IHC-P, IF, ICC, ELISA
Host/Source	Rabbit
Reactivity	Human, Mouse

PRODUCT PROPERTIES

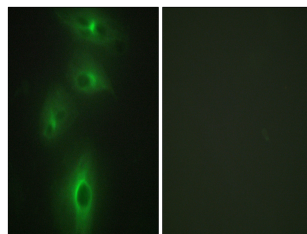
Clonality	Polyclonal
Clone ID	
Concentration	1 mg/mL
Conjugation	Unconjugated
Purification	The antibody was affinity-purified from rabbit anti-serum by affinity-chromatography.
Dilution Range	WB 1:500-1:2000 IHC 1:100-1:300 IF 1:200-1:1000 ELISA 1:10000
Formulation	PBS, 50% Glycerol, 0.5% BSA and 0.02% Sodium Azide.
Isotype	IgG
Storage Instruction	Store at -20°C for up to 1 year from the date of receipt, and avoid repeat freeze-thaw cycles.

TARGET INFORMATION

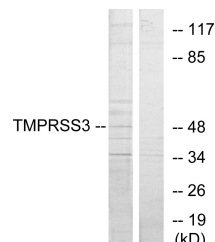
Gene ID	64699
Gene Symbol	TMPRSS3
Uniprot ID	TMPS3_HUMAN
Immunogen	The antiserum was produced against synthesized peptide derived from human TMPRSS3 at amino acid range 405-454
Immunogen Region	380-460 C-Term
Specificity	TMPRSS3 polyclonal antibody (Transmembrane Protease Serine 3) binds to endogenous Transmembrane Protease Serine 3 at the amino acid region 380-460 C-Term.
Immunogen Sequence	



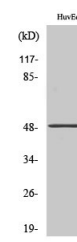
Western blot analysis of the lysates from HT-29 cells using TMPRSS3 antibody.



Immunofluorescence analysis of HeLa cells, using TMPRSS3 Antibody. The picture on the right is blocked with the synthesized peptide.



Western blot analysis of lysates from HUVEC cells, using TMPRSS3 Antibody. The lane on the right is blocked with the synthesized peptide.



Western blot analysis of various cells using TMPRSS3 Polyclonal Antibody. Secondary antibody was diluted at 1:20000

This product is suitable for in-vitro studies under the RESEARCH USE ONLY [RUO] licence. This product must not be used as for diagnostic or other medical purposes.
St John's Laboratory Ltd, Knowledge Dock Business Centre, University Way, London, E16 2RD | Tel: 0208 223 3081