

Anti-TMEM185A antibody (260-340 C-Term) (STJ96045)

STJ96045

GENERAL INFORMATION

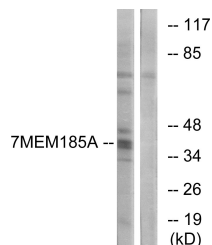
Product Type	Primary antibodies
Short Description	Rabbit polyclonal antibody anti-Transmembrane Protein 185a (260-340 C-Term) is suitable for use in Western Blot, Immunohistochemistry, Immunofluorescence, Immunocytochemistry and ELISA research applications.
Applications	WB, IHC-P, IF, ICC, ELISA
Host/Source	Rabbit
Reactivity	Human, Mouse

PRODUCT PROPERTIES

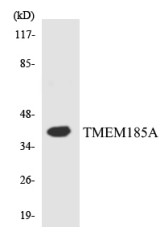
Clonality	Polyclonal
Clone ID	
Concentration	1 mg/mL
Conjugation	Unconjugated
Purification	The antibody was affinity-purified from rabbit anti-serum by affinity-chromatography.
Dilution Range	WB 1:500-1:2000 IHC 1:100-1:300 IF 1:200-1:1000 ELISA 1:20000
Formulation	PBS, 50% Glycerol, 0.5% BSA and 0.02% Sodium Azide.
Isotype	IgG
Storage Instruction	Store at -20°C for up to 1 year from the date of receipt, and avoid repeat freeze-thaw cycles.

TARGET INFORMATION

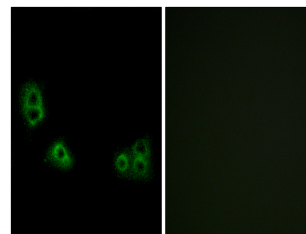
Gene ID	84548
Gene Symbol	TMEM185A
Uniprot ID	T185A_HUMAN
Immunogen	The antiserum was produced against synthesized peptide derived from human TMEM185A at amino acid range 290-339
Immunogen Region	260-340 C-Term
Specificity	TMEM185A polyclonal antibody (Transmembrane Protein 185a) binds to endogenous Transmembrane Protein 185a at the amino acid region 260-340 C-Term.
Immunogen Sequence	



Western blot analysis of lysates from K562 cells, using TMEM185A Antibody. The lane on the right is blocked with the synthesized peptide.



Western blot analysis of the lysates from HT-29 cells using TMEM185A antibody.



Immunofluorescence analysis of MCF7 cells, using TMEM185A Antibody. The picture on the right is blocked with the synthesized peptide.

This product is suitable for in-vitro studies under the RESEARCH USE ONLY [RUO] licence. This product must not be used as for diagnostic or other medical purposes.
St John's Laboratory Ltd, Knowledge Dock Business Centre, University Way, London, E16 2RD | Tel: 0208 223 3081