

Anti-TMEM101 antibody (70-150 Internal) (STJ96042)

STJ96042

GENERAL INFORMATION

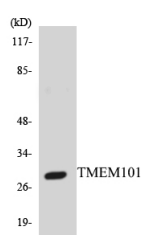
Product Type	Primary antibodies
Short Description	Rabbit polyclonal antibody anti-Transmembrane Protein 101 (70-150 Internal) is suitable for use in Western Blot and ELISA research applications.
Applications	WB, ELISA
Host/Source	Rabbit
Reactivity	Human, Mouse

PRODUCT PROPERTIES

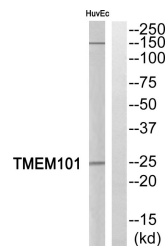
Clonality	Polyclonal
Clone ID	
Concentration	1 mg/mL
Conjugation	Unconjugated
Purification	The antibody was affinity-purified from rabbit anti-serum by affinity-chromatography.
Dilution Range	WB 1:500-1:2000 ELISA 1:10000
Formulation	PBS, 50% Glycerol, 0.5% BSA and 0.02% Sodium Azide.
Isotype	IgG
Storage	Store at -20°C for up to 1 year from the date of receipt, and avoid repeat freeze-thaw cycles.
Instruction	

TARGET INFORMATION

Gene ID	84336
Gene Symbol	TMEM101
Uniprot ID	TM101_HUMAN
Immunogen	The antiserum was produced against synthesized peptide derived from human TMEM101 at amino acid range 101-150
Immunogen Region	70-150 Internal
Specificity	TMEM101 polyclonal antibody (Transmembrane Protein 101) binds to endogenous Transmembrane Protein 101 at the amino acid region 70-150 Internal.
Immunogen Sequence	



Western blot analysis of the lysates from HepG2 cells using TMEM101 antibody.



Western blot analysis of TMEM101 Antibody. The lane on the right is blocked with the TMEM101 peptide.

This product is suitable for in-vitro studies under the RESEARCH USE ONLY [RUO] licence. This product must not be used as for diagnostic or other medical purposes.
 St John's Laboratory Ltd, Knowledge Dock Business Centre, University Way, London, E16 2RD | Tel: 0208 223 3081