

Anti-TM4SF1 antibody (10-90 N-Term) (STJ96040)

STJ96040

GENERAL INFORMATION

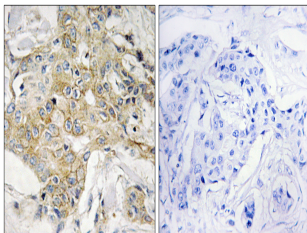
Product Type	Primary antibodies
Short Description	Rabbit polyclonal antibody anti-Transmembrane 4 L6 Family Member 1 (10-90 N-Term) is suitable for use in Immunohistochemistry, Immunofluorescence and ELISA research applications.
Applications	IHC-P, IF-P, ELISA
Host/Source	Rabbit
Reactivity	Human, Mouse

PRODUCT PROPERTIES

Clonality	Polyclonal
Clone ID	
Concentration	1 mg/mL
Conjugation	Unconjugated
Purification	The antibody was affinity-purified from rabbit anti-serum by affinity-chromatography.
Dilution Range	IHC 1:100-1:300 ELISA 1:20000
Formulation	PBS, 50% Glycerol, 0.5% BSA and 0.02% Sodium Azide.
Isotype	IgG
Storage Instruction	Store at -20°C for up to 1 year from the date of receipt, and avoid repeat freeze-thaw cycles.

TARGET INFORMATION

Gene ID	4071
Gene Symbol	TM4SF1
Uniprot ID	T4S1_HUMAN
Immunogen	The antiserum was produced against synthesized peptide derived from human T4S1 at amino acid range 1-50
Immunogen Region	10-90 N-Term
Specificity	TM4SF1 polyclonal antibody (Transmembrane 4 L6 Family Member 1) binds to endogenous Transmembrane 4 L6 Family Member 1 at the amino acid region 10-90 N-Term.
Immunogen Sequence	



Immunohistochemistry analysis of paraffin-embedded human breast carcinoma tissue, using T4S1 Antibody. The picture on the right is blocked with the synthesized peptide.