

Anti-TLK2 antibody (160-240 Internal) (STJ96039)

STJ96039

GENERAL INFORMATION

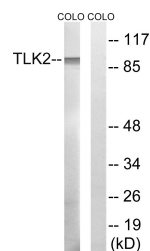
Product Type	Primary antibodies
Short Description	Rabbit polyclonal antibody anti-Serine/Threonine-Protein Kinase Tousled-Like 2 (160-240 Internal) is suitable for use in Western Blot and ELISA research applications.
Applications	WB, ELISA
Host/Source	Rabbit
Reactivity	Human, Mouse

PRODUCT PROPERTIES

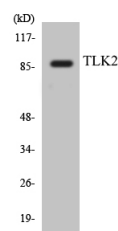
Clonality	Polyclonal
Clone ID	
Concentration	1 mg/mL
Conjugation	Unconjugated
Purification	The antibody was affinity-purified from rabbit anti-serum by affinity-chromatography.
Dilution Range	WB 1:500-1:2000 ELISA 1:5000
Formulation	PBS, 50% Glycerol, 0.5% BSA and 0.02% Sodium Azide.
Isotype	IgG
Storage Instruction	Store at -20°C for up to 1 year from the date of receipt, and avoid repeat freeze-thaw cycles.

TARGET INFORMATION

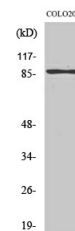
Gene ID	11011
Gene Symbol	TLK2
Uniprot ID	TLK2_HUMAN
Immunogen	The antiserum was produced against synthesized peptide derived from human TLK2 at amino acid range 191-240
Immunogen Region	160-240 Internal
Specificity	TLK2 polyclonal antibody (Serine/Threonine-Protein Kinase Tousled-Like 2) binds to endogenous Serine/Threonine-Protein Kinase Tousled-Like 2 at the amino acid region 160-240 Internal.
Immunogen Sequence	



Western blot analysis of lysates from COLO cells, using TLK2 Antibody. The lane on the right is blocked with the synthesized peptide.



Western blot analysis of the lysates from HeLa cells using TLK2 antibody.



Western blot analysis of various cells using TLK2 Polyclonal Antibody. Secondary antibody was diluted at 1:20000 cells nucleus extracted by Minute™ Cytoplasmic and Nuclear Fractionation kit (SC-003, Inventibiotec, MN, USA).

This product is suitable for in-vitro studies under the RESEARCH USE ONLY [RUO] licence. This product must not be used as for diagnostic or other medical purposes.
St John's Laboratory Ltd, Knowledge Dock Business Centre, University Way, London, E16 2RD | Tel: 0208 223 3081