

## Anti-TLK1 antibody (680-760) (STJ96038)

STJ96038

### GENERAL INFORMATION

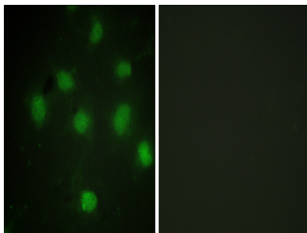
<b>Product Type</b>	Primary antibodies
<b>Short Description</b>	Rabbit polyclonal antibody anti-Serine/Threonine-Protein Kinase Tousled-Like 1 (680-760) is suitable for use in Immunofluorescence, Immunocytochemistry and ELISA research applications.
<b>Applications</b>	IF, ICC, ELISA
<b>Host/Source</b>	Rabbit
<b>Reactivity</b>	Human, Mouse

### PRODUCT PROPERTIES

<b>Clonality</b>	Polyclonal
<b>Clone ID</b>	
<b>Concentration</b>	1 mg/mL
<b>Conjugation</b>	Unconjugated
<b>Purification</b>	The antibody was affinity-purified from rabbit anti-serum by affinity-chromatography.
<b>Dilution Range</b>	IF 1:200-1:1000 ELISA 1:5000
<b>Formulation</b>	PBS, 50% Glycerol, 0.5% BSA and 0.02% Sodium Azide.
<b>Isotype</b>	IgG
<b>Storage Instruction</b>	Store at -20°C for up to 1 year from the date of receipt, and avoid repeat freeze-thaw cycles.

### TARGET INFORMATION

<b>Gene ID</b>	<a href="#">9874</a>
<b>Gene Symbol</b>	<a href="#">TLK1</a>
<b>Uniprot ID</b>	<a href="#">TLK1_HUMAN</a>
<b>Immunogen</b>	The antiserum was produced against synthesized peptide derived from human TLK1 at amino acid range 730-779
<b>Immunogen Region</b>	680-760
<b>Specificity</b>	TLK1 polyclonal antibody (Serine/Threonine-Protein Kinase Tousled-Like 1) binds to endogenous Serine/Threonine-Protein Kinase Tousled-Like 1 at the amino acid region 680-760.
<b>Immunogen Sequence</b>	



Immunofluorescence analysis of COS7 cells, using TLK1 Antibody. The picture on the right is blocked with the synthesized peptide.