

Anti-TLK1 antibody (180-260 Internal) (STJ96037)

STJ96037

GENERAL INFORMATION

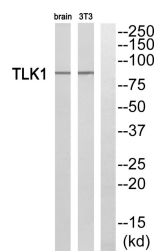
Product Type	Primary antibodies
Short Description	Rabbit polyclonal antibody anti-Serine/Threonine-Protein Kinase Tousled-Like 1 (180-260 Internal) is suitable for use in Western Blot and ELISA research applications.
Applications	WB, ELISA
Host/Source	Rabbit
Reactivity	Human, Rat, Mouse

PRODUCT PROPERTIES

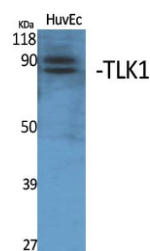
Clonality	Polyclonal
Clone ID	
Concentration	1 mg/mL
Conjugation	Unconjugated
Purification	The antibody was affinity-purified from rabbit anti-serum by affinity-chromatography.
Dilution Range	WB 1:500-1:2000 ELISA 1:40000
Formulation	PBS, 50% Glycerol, 0.5% BSA and 0.02% Sodium Azide.
Isotype	IgG
Storage Instruction	Store at -20°C for up to 1 year from the date of receipt, and avoid repeat freeze-thaw cycles.

TARGET INFORMATION

Gene ID	9874
Gene Symbol	TLK1
Uniprot ID	TLK1_HUMAN
Immunogen	The antiserum was produced against synthesized peptide derived from human TLK1 at amino acid range 201-250
Immunogen Region	180-260 Internal
Specificity	TLK1 polyclonal antibody (Serine/Threonine-Protein Kinase Tousled-Like 1) binds to endogenous Serine/Threonine-Protein Kinase Tousled-Like 1 at the amino acid region 180-260 Internal.
Immunogen Sequence	



Western blot analysis of TLK1 Antibody. The lane on the right is blocked with the TLK1 peptide.



Western blot analysis of various cells using TLK1 Polyclonal Antibody. Secondary antibody was diluted at 1:20000