

Anti-TLE4 antibody (130-210 Internal) (STJ96036)

STJ96036

GENERAL INFORMATION

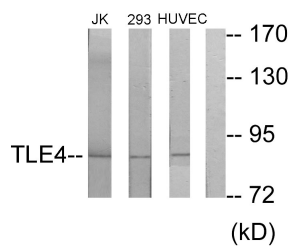
Product Type	Primary antibodies
Short Description	Rabbit polyclonal antibody anti-Transducin-Like Enhancer Protein 4 (130-210 Internal) is suitable for use in Western Blot, Immunohistochemistry, Immunofluorescence and ELISA research applications.
Applications	WB, IHC-P, IF-P, ELISA
Host/Source	Rabbit
Reactivity	Human, Mouse, Rat

PRODUCT PROPERTIES

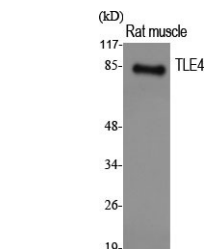
Clonality	Polyclonal
Clone ID	
Concentration	1 mg/mL
Conjugation	Unconjugated
Purification	The antibody was affinity-purified from rabbit anti-serum by affinity-chromatography.
Dilution Range	WB 1:500-1:2000 IHC 1:100-1:300 ELISA 1:20000
Formulation	PBS, 50% Glycerol, 0.5% BSA and 0.02% Sodium Azide.
Isotype	IgG
Storage Instruction	Store at -20°C for up to 1 year from the date of receipt, and avoid repeat freeze-thaw cycles.

TARGET INFORMATION

Gene ID	7091
Gene Symbol	TLE4
Uniprot ID	TLE4_HUMAN
Immunogen	The antiserum was produced against synthesized peptide derived from human TLE4 at amino acid range 161-210
Immunogen Region	130-210 Internal
Specificity	TLE4 polyclonal antibody (Transducin-Like Enhancer Protein 4) binds to endogenous Transducin-Like Enhancer Protein 4 at the amino acid region 130-210 Internal.
Immunogen Sequence	



Western blot analysis of lysates from Jurkat, 293, and HUVEC cells, using TLE4 Antibody. The lane on the right is blocked with the synthesized peptide.



Western blot analysis of various cells using TLE4 Polyclonal Antibody. Secondary antibody was diluted at 1:20000 cells nucleus extracted by Minute™ Cytoplasmic and Nuclear Fractionation kit (SC-003, Inventiotech, MN, USA).

This product is suitable for in-vitro studies under the RESEARCH USE ONLY [RUO] licence. This product must not be used as for diagnostic or other medical purposes.
St John's Laboratory Ltd, Knowledge Dock Business Centre, University Way, London, E16 2RD | Tel: 0208 223 3081