

Anti-ZFP36L2 antibody (180-260 Internal) (STJ96034)

STJ96034

GENERAL INFORMATION

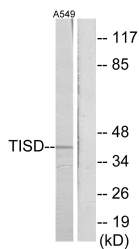
| | |
|--------------------------|--|
| Product Type | Primary antibodies |
| Short Description | Rabbit polyclonal antibody anti-Mrna Decay Activator Protein Zfp36l2 (180-260 Internal) is suitable for use in Western Blot, Immunohistochemistry, Immunofluorescence and ELISA research applications. |
| Applications | WB, IHC-P, IF-P, ELISA |
| Host/Source | Rabbit |
| Reactivity | Human, Mouse |

PRODUCT PROPERTIES

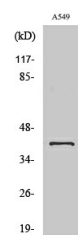
| | |
|----------------------------|--|
| Clonality | Polyclonal |
| Clone ID | |
| Concentration | 1 mg/mL |
| Conjugation | Unconjugated |
| Purification | The antibody was affinity-purified from rabbit anti-serum by affinity-chromatography. |
| Dilution Range | WB 1:500-1:2000 IHC 1:100-1:300 ELISA 1:20000 |
| Formulation | PBS, 50% Glycerol, 0.5% BSA and 0.02% Sodium Azide. |
| Isotype | IgG |
| Storage Instruction | Store at -20°C for up to 1 year from the date of receipt, and avoid repeat freeze-thaw cycles. |

TARGET INFORMATION

| | |
|---------------------------|--|
| Gene ID | 678 |
| Gene Symbol | ZFP36L2 |
| Uniprot ID | TISD_HUMAN |
| Immunogen | The antiserum was produced against synthesized peptide derived from human TISD at amino acid range 207-256 |
| Immunogen Region | 180-260 Internal |
| Specificity | ZFP36L2 polyclonal antibody (Mrna Decay Activator Protein Zfp36l2) binds to endogenous Mrna Decay Activator Protein Zfp36l2 at the amino acid region 180-260 Internal. |
| Immunogen Sequence | |



Western blot analysis of lysates from A549 cells, using TISD Antibody. The lane on the right is blocked with the synthesized peptide.



Western blot analysis of various cells using TIS11D Polyclonal Antibody. Secondary antibody was diluted at 1:20000

This product is suitable for in-vitro studies under the RESEARCH USE ONLY [RUO] licence. This product must not be used as for diagnostic or other medical purposes.
St John's Laboratory Ltd, Knowledge Dock Business Centre, University Way, London, E16 2RD | Tel: 0208 223 3081