

Anti-ZFP36L1 antibody (30-110) (STJ96033)

STJ96033

GENERAL INFORMATION

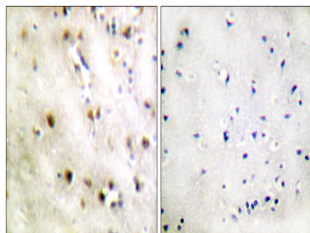
Product Type	Primary antibodies
Short Description	Rabbit polyclonal antibody anti-Mrna Decay Activator Protein Zfp36l1 (30-110) is suitable for use in Western Blot, Immunohistochemistry, Immunofluorescence and ELISA research applications.
Applications	WB, IHC-P, IF-P, ELISA
Host/Source	Rabbit
Reactivity	Human, Mouse, Rat

PRODUCT PROPERTIES

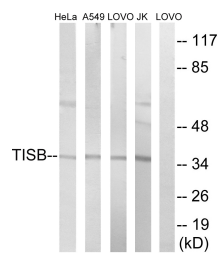
Clonality	Polyclonal
Clone ID	
Concentration	1 mg/mL
Conjugation	Unconjugated
Purification	The antibody was affinity-purified from rabbit anti-serum by affinity-chromatography.
Dilution Range	WB 1:500-1:2000 IHC 1:100-1:300 ELISA 1:10000
Formulation	PBS, 50% Glycerol, 0.5% BSA and 0.02% Sodium Azide.
Isotype	IgG
Storage Instruction	Store at -20°C for up to 1 year from the date of receipt, and avoid repeat freeze-thaw cycles.

TARGET INFORMATION

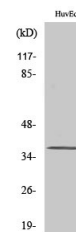
Gene ID	677
Gene Symbol	ZFP36L1
Uniprot ID	TISB_HUMAN
Immunogen	The antiserum was produced against synthesized peptide derived from human TISB at amino acid range 58-107
Immunogen Region	30-110
Specificity	ZFP36L1 polyclonal antibody (Mrna Decay Activator Protein Zfp36l1) binds to endogenous Mrna Decay Activator Protein Zfp36l1 at the amino acid region 30-110.
Immunogen Sequence	



Immunohistochemistry analysis of paraffin-embedded human brain tissue, using TISB Antibody. The picture on the right is blocked with the synthesized peptide.



Western blot analysis of lysates from Jurkat, HeLa, A549, and LOVO cells, using TISB Antibody. The lane on the right is blocked with the synthesized peptide.



Western blot analysis of various cells using TIS11B Polyclonal Antibody. Secondary antibody was diluted at 1:20000

This product is suitable for in-vitro studies under the RESEARCH USE ONLY [RUO] licence. This product must not be used as for diagnostic or other medical purposes.
St John's Laboratory Ltd, Knowledge Dock Business Centre, University Way, London, E16 2RD | Tel: 0208 223 3081