

Anti-KAT5 antibody (30-110) (STJ96031)

STJ96031

GENERAL INFORMATION

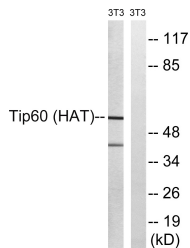
Product Type	Primary antibodies
Short Description	Rabbit polyclonal antibody anti-Histone Acetyltransferase Kat5 (30-110) is suitable for use in Western Blot and ELISA research applications.
Applications	WB, ELISA
Host/Source	Rabbit
Reactivity	Human, Mouse, Rat

PRODUCT PROPERTIES

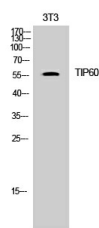
Clonality	Polyclonal
Clone ID	
Concentration	1 mg/mL
Conjugation	Unconjugated
Purification	The antibody was affinity-purified from rabbit anti-serum by affinity-chromatography.
Dilution Range	WB 1:500-1:2000 ELISA 1:10000
Formulation	PBS, 50% Glycerol, 0.5% BSA and 0.02% Sodium Azide.
Isotype	IgG
Storage Instruction	Store at -20°C for up to 1 year from the date of receipt, and avoid repeat freeze-thaw cycles.

TARGET INFORMATION

Gene ID	10524
Gene Symbol	KAT5
Uniprot ID	KAT5_HUMAN
Immunogen	The antiserum was produced against synthesized peptide derived from human Tip60 at amino acid range 56-105
Immunogen Region	30-110
Specificity	KAT5 polyclonal antibody (Histone Acetyltransferase Kat5) binds to endogenous Histone Acetyltransferase Kat5 at the amino acid region 30-110.
Immunogen Sequence	



Western blot analysis of lysates from NIH/3T3 cells, treated with starved 24h, using Tip60 Antibody. The lane on the right is blocked with the synthesized peptide.



Western blot analysis of 3T3 cells using TIP60 Polyclonal Antibody. Secondary antibody was diluted at 1:20000

This product is suitable for in-vitro studies under the RESEARCH USE ONLY [RUO] licence. This product must not be used as for diagnostic or other medical purposes.
St John's Laboratory Ltd, Knowledge Dock Business Centre, University Way, London, E16 2RD | Tel: 0208 223 3081